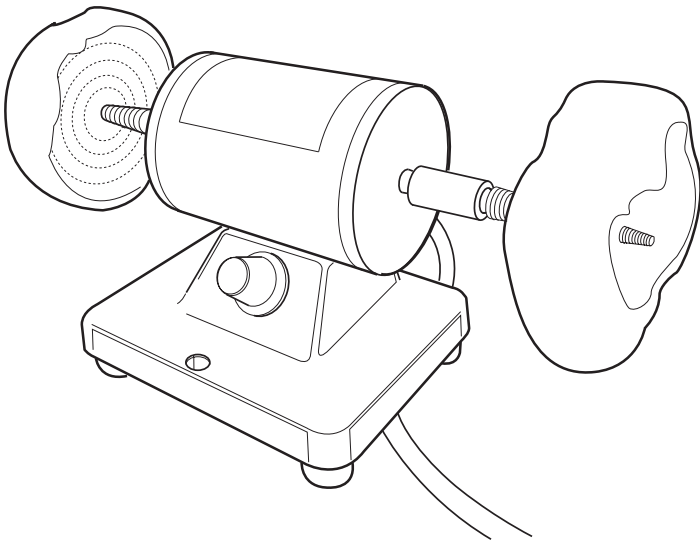


Owner's Manual

PROBUFF



**PSI PROBUFF System with two tapered spindles,
three 4" wheels, two polishing compounds, and wax**



Safety Instructions

Before using your PROBUFF, please read all safety instructions. They are for your protection and should always be followed to reduce the risk of personal injury or damage to the tool.

Always wear proper eye and face protection. Safety glasses or face shields should be worn whenever you operate this or any power tool to prevent serious eye or face injuries.

Do not wear loose clothing or jewelry and be sure to tie back long hair.

Never operate any accessory at speeds above its maximum speed rating. When properly used, all PSI accessories can be operated at the speeds listed on the packing. Only accessories rated for 7,000RPM or more should be used with the PROBUFF.

Always determine the manufacturer's speed rating before using accessories other than PSI's accessories. Safety requirements for the use, care and protection of abrasive wheels are contained in ANSI Standards B7.1-1978. (Available from ANSI 1430 Broadway, New York, New York 10018.)

Never use or continue to use any accessory which appears to be damaged, loose, vibrating, or out of balance. Inspect each accessory for flaws before using it.

Never use excessive side pressures which may tend to bend or break the shank or arbor of an accessory. Let the speed of the accessory do the work.

Do not stall the motor by jamming or using excessive pressure on the polishing wheel, buff wheel, or accessory. This can result in damage to the motor.

Never operate your power tool during a perceptible power decrease. Turn power tool off and do not use until power is fully restored.

Use proper grounding procedures. This tool should be grounded while in use to protect the operator from electric shock. The tool is equipped with an approved 3-conductor cord and a 3-prong plug to fit the proper grounding receptacle. Use only 3-wire extension cords that have 3-prongs as well as 3-pole receptacles that accept the tool's plug.

Always disconnect the power cord before servicing the motor. Never use this tool in an area where flammable vapors are present.

Always wear a respirator and work in a well-ventilated area to avoid inhaling dust into your lungs.

Always hold your work firmly. Wear gloves to hold items that become hot. Small pieces should be held with a hand vise or wedge clamp.

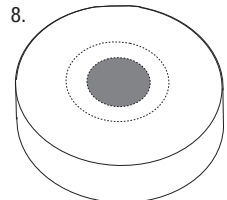
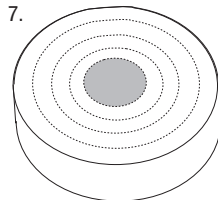
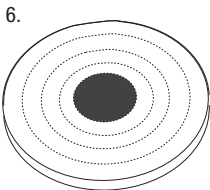
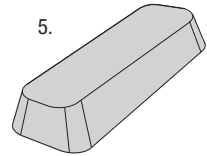
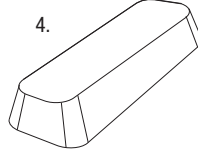
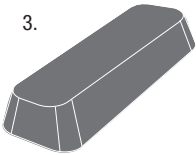
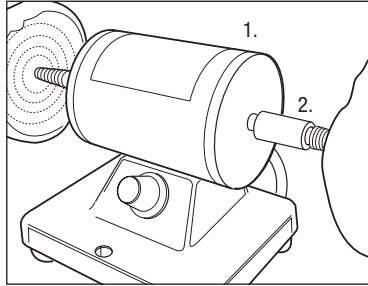
Always keep children and bystanders at a safe distance from the buffer while it's in use.

Warranty

This product is warranted against defects in material and workmanship for a period of two years for all components. This warranty applies to the original purchaser of the product and is limited to the repair or replacement of the product or its parts at the discretion of PSI Woodworking Products. Excluded are parts which have been misused, abused, altered, or consumed by normal operation of the machine. Also excluded are direct or consequential damages to persons, properties, or materials. Your invoice serves as proof of purchase and must be referenced to authorize warranty repairs. Call your PSI dealer for proper authorization.

Contents of Package

- 1) Motor Assembly
- 2) Mandrels (2)
- 3) Tripoli Compound (#PROW1)
- 4) White Diamond Compound (#PROW2)
- 5) Carnuba Wax Compound (#PROW3)
- 6) Muslin Buffing Wheel (#PROX1)
- 7) Tightly Stitched Cotton Buffing Wheel (#PROX2)
- 8) Loosely Stitched Cotton Buffing Wheel (#PROX3)



PROBUFF Specifications

Motor – 110 Volts
200 Watt
2 amp (max.)
.5 amp (no load)

Speeds – 1800 to 7000RPM

Dimensions- 5-1/4" x 11-3/4"

Shaft- 5/16"

Assembly Instructions

- 1) Slide mandrels (2) , onto the motor arbor.
- 2) Tighten set screws onto shafts – align with flat indents.
- 3) Mount buffing wheels:
Right-hand side screws on *clockwise*
Left-hand side screws on *counter-clockwise*
- 4) Secure the tool to your worktable using the mounting hole on the front of the base.

Maintenance

Lubrication: The PSI PROBUFF has pre-lubricated ball bearings and a dust-proof motor housing that does not require any lubrication. The motor is designed to operate at about 40° -50° F above room temperature, which will be warm to the touch but does not harm the motor.

Wood Finishing Sequence

- 1) Mount the muslin wheel on the right hand arbor and the tightly stitched cotton wheel on the left hand arbor.
- 2) Apply the Tripoli compound to the muslin wheel and polish. See the instructions in the “How to Apply Compounds” section and the “Buffing and Polishing” sections below.
- 3) Apply the White Diamond compound to the tightly stitched wheel and polish. See instructions below.
- 4) After completing steps 2) and 3), remove one of the buffing wheels and mount the loosely stitched wheel.
- 5) Apply the Carnuba wax to the loosely stitched wheel and polish per instructions below.

How to Apply Compounds

1) How to apply PROBUFF compounds to new buffing wheels

- a) While the wheel is revolving toward you, pass a bar of compound lightly across the face of the wheel, slightly below the motor spindle until the face of the wheel is lightly coated. Always apply the compound to the wheel and never to the article itself.
- b) Spread the compound evenly by holding a clean piece of flat wood against the wheel face. When the compound is evenly distributed, the wheel is ready for buffing or polishing. Apply additional compound as needed with a wiping motion.

2) How to apply compounds to previously used wheels

- a) It is best to use a separate wheel for each type of compound to avoid contamination and scratches. When absolutely necessary, used wheels should be cleaned by holding a file edge or the edge of a hack saw blade against the revolving wheel. Only compounds the same, or coarser than the one used previously should be applied to the used wheel. **Never** use a final polishing or coloring compound on a wheel or buff that has been previously used for coarse cutting or buffing.

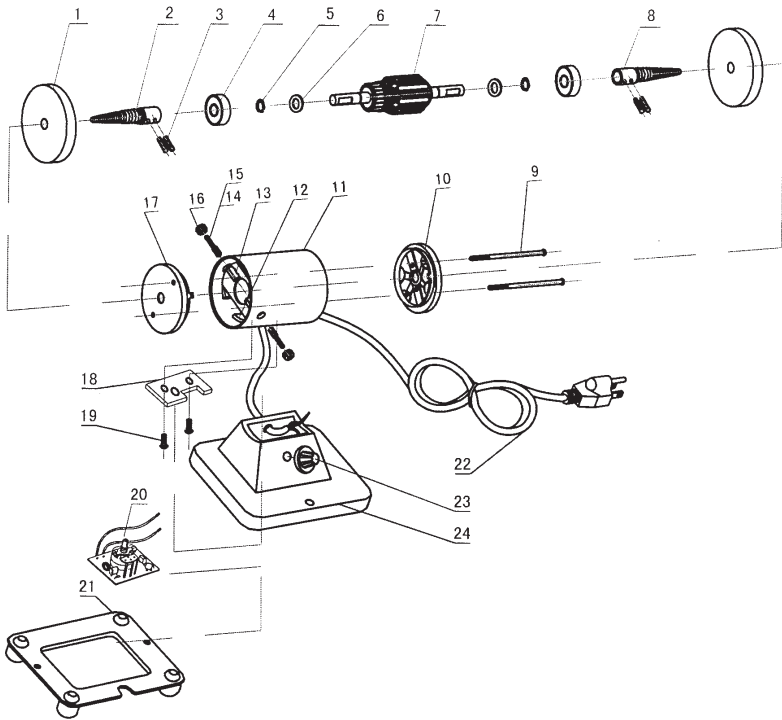
Buffing and Polishing

Workpiece Control for Buffing and Polishing

- a) Make sure the wheel is revolving toward you. Grasp your workpiece firmly, remembering that the work piece may become hot during buffing or polishing operations. Small articles can be held with hand vises or wedge clamps. Keep the upper edge of the workpiece away from the wheel to avoid having it torn from your hands.
- b) Press the workpiece firmly against the revolving wheel, slightly below the center. The compound will stick to the article if you are pressing too lightly; and the wheel will slow down if you are pressing too firmly.
- c) Keep the workpiece in constant motion, turning it quickly. This will help avoid buffing or scratching marks. As a rule of thumb, 80%-90% of the operation will be spent on buffing (usually with Tripoli), and 10%-20% will be spent on the final polishing operation.

Speed

Your PROBUFF has variable speed control from 1800 to 7000RPM. On a 4" wheel, a speed of 1800-3450RPM is recommended for polishing, and 3450-7000RPM for buffing.



Parts List

See diagram above.

- | | |
|--------------------------|-------------------|
| 1. Buffing Wheel | 13. Brush Bracket |
| 2. Left Conical Adapter | 14. Carbon Brush |
| 3. Hex Screw | 15. Brush Spring |
| 4. Bearing 608 | 16. Brush Cap |
| 5. Retaining Ring | 17. Left End Bell |
| 6. Washer | 18. Bracket |
| 7. Rotor | 19. Screw M5X12 |
| 8. Right Conical Adapter | 20. Circuit Board |
| 9. Bolt | 21. Base pad |
| 10. Right End Bell | 22. Power Cord |
| 11. Housing | 23. Switch |
| 12. Permanent Magnet | 24. Base |



© 2004 PSI Woodworking
9900 Global Road, Philadelphia, PA 19115
V1-0804