

Metal Spinning - The Next Step in Your Turning Experience



We make it easy to get started with everything you need to spin gorgeous metal projects on a woodturning lathe with our new line of Spinncrafters™ Metal Spinning Products.



Penn State Industries

1.800.377.7297 • www.pennstateind.com

Fall 2011 - Vol. 1

The Possibilities Are Endless

Metal spinning is the centuries-old art of shaping sheet metal disks into contoured forms. Similar to a potter forming clay on a wheel, the spinner rotates a metal disk on a lathe and, applying pressure, shapes it into a new form. The results can be used in an infinite number of products, from aerospace parts to beautiful works of art. Since the creation of mass-produced metal products, metal spinning has become a vanishing craft.

This fun and age old art form is now available to the woodturner! With a 10" midi lathe or larger, you can spin many different kinds of metals including aluminum, brass, copper, pewter, silver and more. Every type of metal produces a different look, finish and texture.



Aluminum is the easiest to learn on and spin – so it's the metal of choice to start your experience. Penn State Industries now brings this art form to the wood turner to expand thier craft. Imagine the possibilities!

- **Use your existing wood lathe** to easily get started spinning
- **Spin many projects** including bowls, bells, pots, vases, lamps, plates and much more
- **Mix metal and wood together** to add a creative flair to your wood turning
- **Reproduce** your custom profile in an indefinite number of exact copies
- **Try your project in different metals** & create a different look

We've partnered with world renowned Metal Spinner Terry Tynan from the Metal Spinning Workshop™ to design our SpinCrafters™ line of Metal Spinning supplies. Together we've de-

veloped a unique turnkey Starter Package that includes quality, affordable spinning equipment and projects that will get you up and running quickly. We are proud to bring you this new opportunity to expand your creativity into metal spun projects. We're sure you'll find metal spinning rewarding, satisfying, challenging and addictive!



FREE Metal Spinning DVD

This 45-minute instructional DVD explains all the tools, techniques and fine details you will need to get started.

#MSTDVD **FREE**



Getting Started with Metal Spinning is Easy



Spincrafters™ Metal Spinning Starter Package

This all-inclusive set includes everything you need to get started with metal spinning. It includes the tools, toolrest, accessories, and 30 aluminum spinning discs to make 10 Mini Planter projects, 10 Bowl projects and 10 Utility Tray projects. You'll need a wood lathe with a 10" swing or larger, 1/2HP motor, 5/8" toolrest holder, 1" x 8tpi headstock and live tailstock center (You'll find these specifications on most modern midi lathes by PSI Wodworking™, Delta™, Jet™, Rikon™ and others).

The set includes:

- A. 3-piece Spincrafters™ Tool Set that includes a Combo Tool, Beading Tool and a Trimming Tool
- B. Metal Spinning Multi-Position Toolrest (5/8" shank)
- C. 10 each 5-1/2" aluminum discs for each project (30 total)
- D. Mini planter - Mandrel w/ follow block
- E. Utility tray- Mandrel w/ follow block
- F. Mini bowl - Mandrel w/ follow block
- G. Spinning lubricant with dolly applicator
- H. Abrasive finishing pad
- I. Spindle washer
- J. Deburring tool
- K. FREE Comprehensive 45 minute instructional DVD produced by the Metal Spinning Workshop. This DVD explains how to use all the tools and accessories included in the set and detailed instructions on metal spinning techniques plus how to make the 3 included projects.

SpinCrafters™ Metal Spinning Starter Package #MSSTART Value \$365 **\$299.00** Save \$66

www.pennstateind.com

3

What You'll Need to Start

Metal Spinning requires certain basic tools and project supplies to get started.

- **Mini Lathe:** With at least 1/2HP motor and 10" inch swing. Requires a live tailstock and toolrest holder.
- **Mandrel:** The form that your project will ultimately take. Threads onto your headstock.
- **Metal Disc:** Is laminated against the mandrel to generate the final shape.
- **Follow block:** Presses the disc against the Mandrel

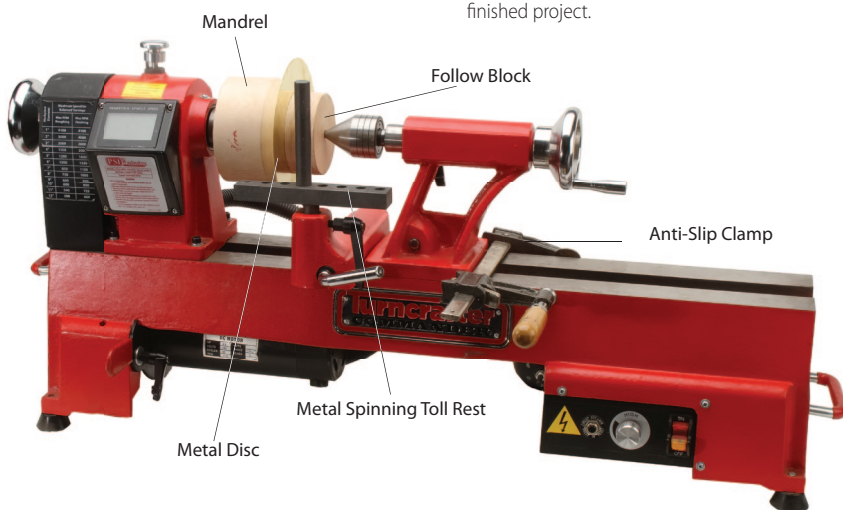
- **Metal Spinning toolrest:** designed to enable the spinning toll to exert pressure against the spinning mandrel/form

- **Spinning Tools:**

Combo Tool - Used to press the disc against the mandrel

Trim Tool - trims the excess metal from your finished project

Beading Tool - Provides a beaded edge to the rim of the finished project.

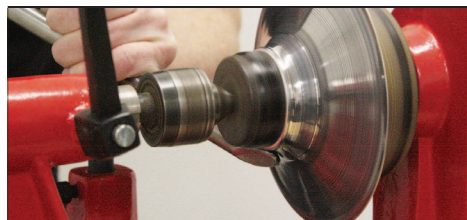


Spin a Metal Project in 6 Easy Steps



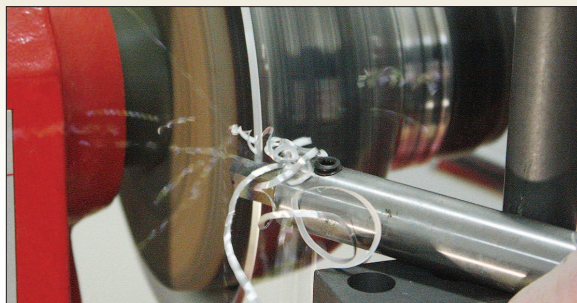
1. Mount Your Project:

Screw your mandrel onto the headstock, position the aluminum disc, then the follow block. Bring the live tailstock center up to the follow block and press the assembly together. Center the Disc before spinning.



2. Spin your project:

Use the rounded side of the combo tool to press and form the spinning disc onto the mandrel. Leverage against the toolrest; work the material over the length of the mandrel. Use the beeswax lubricant generously to reduce turning friction. Use the tool to press the metal to a smooth.



3. Trim the edge:

Trim the excess metal from the project using the Trimming Tool.



4. Bead the Edge

Use the Beading tool to form a perfect rounded beaded edge to your project.



5. Sand

Use the green sanding pad to remove spinning marks from the project.



6. Polish

Remove the project from the lathe. Use the first wheel treated with the greaseless buffing abrasive compound to bring the project to a smooth, clean finish

Use the green finishing compound on the second wheel to polish the project to a bright polished finish.

Project Mandrels and Follow Blocks

These sets include the mandrel and follow block for Metal Spinning projects. Require 5-1/2" metal spinning discs (not included) to complete any of the projects. Note: the mini flower pot, mini utility tray and mini bowl projects are included in the starter set on page 3.

Mini Flower Pot



Mini Flower Pot Project Wood Mandrel and Follow block
#MSPRJ1*
(This project included with Starter Package)

\$29.95

Mini Utility Pot



Mini Utility Tray Project Wood Mandrel and Follow block
#MSPRJ3*
(This project included with Starter Package)

\$29.95

Mini Bowl



Mini Bowl Project Wood Mandrel and Follow block
#MSPRJ2*
(This project included with Starter Package)

\$29.95

Look for More Spinning Projects and Accessories in future catalogs and on our website



Lathe Mounted Polishing Systems

Our LBUFFSYS is ideal for polishing wood or metal. Purchase the basic wood polishing system, then add the Metal Spinning Polishing Accessories

3-Step Lathe Buffing and Polishing System for Wood

(Note: pre-treating with Danish Oil strongly recommended for best results.)

Get a beautiful and a durable wax finish. Buffing passes are made with a Tripoli buff (linen wheel), White Diamond buff (linen/flannel wheel), then Carnuba wax (flannel wheel). System requires a lathe with a minimum of 1/2HP.

The system includes:

- 3 - 8" fabric buffing wheels
- Tripoli, White Diamond, Carnuba wax bars
- #2MT heavy duty lathe mandrel which holds the buffing wheels.

#LBUFFSYS \$54.95 (UPS \$8)

Replacement Wood Buffing Accessories Waxes

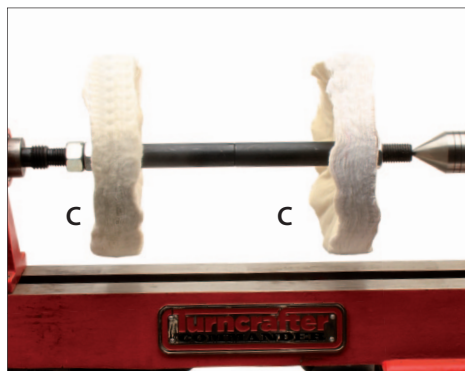
Tripoli Bar	#LBUFFX1	\$5.95
White Diamond Bar	#LBUFFX2	\$6.95
Carnuba Wax Bar	#LBUFFX3	\$5.95



Tripoli fabric wheel	#LBUFFW1	\$11.95
White Diamond fabric wheel	#LBUFFW2	\$9.95
Carnuba Wax fabric wheel	#LBUFFW3	\$9.95

Danish Oil

Pint of Deft Danish Oil #DEFTOIL \$10.95/can*
*Ground UPS Only - Continental U.S.



Add On Products for Buffing And Polishing Metal

We've added metal spinning buffing and finishing Rouge and Paste to our Buffing system to enable you to polish and buff both your Metal Spinning Tools and Metal spun Projects. (requires only 2 of 3 wheels).

Metal Spinning Buffing System

Includes everything you need to buff and polish your spinning project.

- LBUFFSYS - Wood Buffing System
- MSBUFFR - Metal Spinning Paste and Rouge Set

MSBUFF Metal Spinning System \$64.95 (UPS \$9)

A. A greaseless Paste that hardens on the wheel for an aggressive first step to buff your spinning project. 3.5lbs.

#MSBUFFRA \$9.95

B. This Green compound provides a mirror finish to your spinning project. 1lb.

#MSBUFFRB \$6.95

A&B. Metal Buffing Paste and Rouge Set

#MSBUFFR \$16.95

C. 8" Metal Spinning Buffing Wheels for #LBUFFSYS (Set of 2) #MSBUFFW \$10.95

www.pennstateind.com

7

Metal Spinning Tools

We've specially engineered these tools to deliver precise metal spinning results.



SpinCrafters™ Combo Tool

The primary tool for forming the metal disc over the Wood Mandrel. The tip of the tool has a rounded section for general spinning and a flat section for smoothing the material surface. 28" long, 5/8" dia

#MSTCOMBO \$49.95



SpinCrafters™ Trimming Tool

This tool trims the edge of the finished spinning for a precision edge. Supplied with an carbon steel cutter tools for ferrous and non-ferrous materials. 28" long

#MTSCUT \$79.95

Replacement Cutter 2-sided 1/4" x 2 1/2"

A. #MTSCUTX \$24.95



SpinCrafters™ Beading Tool

As the final step, this tool allows turning the perfect beaded edge around the rim of your work. 24" long, 5/8" dia

#MSTBEAD \$59.95

SpinCrafters™ Metal

Spinning Toolrest

Designed to captivate the spinning tools so pressure is applied accurately and uniformly. 5/8" post

#MSTREST* \$34.95



SpinCrafters™ Combination Package

SpinCrafters™ Combination package of above 3 Lathe Tools and Toolrest

#MSTSET ~~\$224.80~~ \$199.95 **Save \$25** (UPS \$9)

Maple Hardwood for Mandrels and Follow Blocks

Turn these maple hardwood kiln dried blanks to the profile of your project. Requires laminating the blocks together with wood glue for deeper projects and tapping a 1" x 8tpi hole for mounting to headstock. Note: Reverse grain directions when laminating.



4" x 4" x 2" (4 pack) #MSMAN442 \$11.95

6" x 6" x 2" (2 pack) #MSMAN662 \$11.95

8" x 8" x 2" (1 pack) #MSMAN882 \$11.95

Follow Block Blank— Bandsaw the follow block profile from this 12"x12"x 1" board

#MSFBLANK \$11.95

Metal Spinning Discs

These metal discs are specifically for metal spinning.



1-2packs 3+ packs

5-1/2" Aluminium Discs (Pack of 10) .032"

#MSAL55-032 \$14.95 \$13.95

5-1/2" Aluminium Discs (Pack of 10) .040"

#MSAL55-040 \$16.95 \$15.95

6-1/2" Aluminum Discs (Pack of 10) .040"

#MSAL65 \$18.95 \$17.95

8" Aluminum Discs (Pack of 5) .040"

#MSAL8 \$12.95 \$11.95

10" Aluminum Discs (Pack of 5) .040"

#MSAL10 \$14.95 \$13.95

3-3/4" Brass Disc (Pack of 9) .040"

#MSBR375 \$24.95 \$23.95

5-3/4" Brass Disc (Pack of 4) .040"

#MSBR575 \$24.95 \$23.95

7-3/4" Brass Disc (Pack of 3) .040"

#MSBR775 \$24.95 \$23.95

*Included in the Starter Set

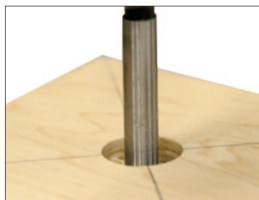


4-Piece Mandrel Tap Set

Makes a perfect 1" x 8tpi threaded hole for your Metal Spinning Mandrel. Includes: 7/8" Forstner bit, 1" x 8tpi tap, 3" centering guide faceplate and spindle washer. An essential accessory if you are making your own metal mandrels.

3pc Mandrel tap set
#MSTAPX \$34.95

How to Tap a Metal Spinning Mandrel Blank



Drill

Use the 1/8" forstner bit to drill a hole at least 1-3/4" deep into the center of the block



Tap

Lock the tap into a vise - thread the tap through the face plate guide and into the hole. Twist the block onto the tap.



Mount tap

Remove the from the block. Place the backplate washer on the headstock then screw the mandrel onto the headstock until it bottoms

Miscellaneous Accessories



60° Live Tailstock Center

This heavy duty live center is essential for securing and spinning your work..

#2MT (1-11/16" dia.) #LCENTLT2 **SALE \$15.95**



4 oz Wax-based Lube and Dolly

Apply the wax using the dolly over your spinning disc.

#MSLUBE* \$12.99



Deburring tool

Deburr rough edges of the finished metal spun project

#MSDEBURR* \$9.95



6" x 9" Abrasive Pad (3 pack)

For polishing of Metal Spun project on the lathe.

H. #MSAPAD* \$6.95



Backplate (Spindle) Washer

2" dia. flat washer for precision mounting wood mandrels on headstock.

#MSWASH* \$3.95

**Included in the Starter Set*

www.pennstateind.com

9

Professional Metal Spinning Tools from The Metal Spinning Workshop™

These hard to find tools were designed and manufactured by Terry Tynan for the professional Metal Spinner. If you want to spin larger work on larger lathes, these larger more robust tools are a must.



A. Professional Combo Tool

This tool is 36" long, 3/4" diameter with hard wood Maple handles with solid Brass Ferrel. The tool combines a round section for general spinning and a flat section for smoothing the metal, giving a high quality finish to your spun products. All of the products shown in the picture were spun using this tool.

#MSXT1 Combination tool \$125.00

B. Professional Trimming Tool

24" long. Hard wood Maple handle and solid Brass Ferrel. The tool includes a 3/8" HSS pre-ground bit for non-ferrous metals and also accepts a 3/8" carbide bit for ferrous metals (not included). This tool allows you to trim back the rim of the metal while spinning.

#MSXT2 Hand Trimmer \$99.00
 #MSST2X Pre-ground HSS Trimmer blade \$12.99
 #MSXT2X Pre-ground Carbide bit for Trimmer \$24.95

Adapt SpinCrafters™ Accessories to Your Lathe

Toolrest Adapter Sleeves

Now you can use our 5/8" shaft SpinCrafters™ toolrest on any lathe. This clever adapter has an I.D. of 5/8" to accept the toolrest shaft and an O.D. compatible with your lathe. Simple installation & flawless transparent functionality. Adapters accept any toolrest with a 5/8" shaft.

5/8" to 3/4" OD	#CLTXX34	\$10.95
5/8" to 7/8" OD	#CLTXX78	\$10.95
5/8" to 1" OD	#CLTXX1	\$10.95
5/8" to 1-1/8" OD	#CLTXX118	\$12.95
5/8" to 1-1/4" OD	#CLTXX114	\$12.95
5/8" to 1-1/2" OD	#CLTXX112	\$16.95



Headstock Spindle Adapters

Use one of these adapters to mount a metal spinning mandrel 1" x 8" tpi on any Lathe.

Headstock	Mandrel	Price	Headstock	Mandrel	Price
#L5818	Shopsmith™ 5/8"	1" x 8tpi \$16.95	#LAG1218	1" x 12 tpi	1" x 8 tpi \$24.95
#LA3418	3/4" x 16tpi	1" x 8tpi \$16.95	#LA11218	1-1/2" x 8tpi	1" x 8 tpi \$19.95
#LA11418	1-1/4" x 8tpi	1" x 8tpi \$19.95	#LA3318	M33 x 3.5 tpi	1" x 8 tpi \$19.95
#LA341018	3/4" x 10tpi	1" x 8 tpi \$16.95			



Make Your Own Mandrels!

If you're a woodturner who would rather make your own metal spinning mandrels - then we have all the top quality blanks and tools you need to accomplish your task.



HSS Roughing Gouge

The roughing gouge aggressively will take square spindle and bowl stock down to round. The ideal first step in preparing your metal spinning mandrel

3/4" Roughing Gouge, 19" L #LX250 \$18.95



HSS Rounded Skews

Use one of these skews for final smoothing and finishing of your mandrel. This rounded profile simply makes this skew easier to use.

- No sharp edges to catch or bind
- Produces super smooth surfaces
- Superior control for any cut you make
- 7/8" & 1/2" Rounded Skew Set

#LXRSET Set \$34.95



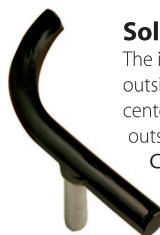
Outboard Bowl Scraper Set

These ground HSS heavy duty scrapers are ideal smoothing and bringing your mandrel to its final shape. The scrapers have a radius designed to easily shear the wood and leave a smooth and clean outside surface. Their thick HSS blades cut aggressively without vibration.

Larger Scrapers: 19" overall length with 6" long by 1" wide and 3/8" thick blade

Smaller Scrapers: 16" overall length with 6" long by 3/4" wide and 5/16" thick blade

B 2-pc HSS Outboard Scraper Set
#LCSIDET \$49.95



Solid Bar 3" Radius Toolrests

The ideal toolrest to use to form the outside of your spinning mandrel. The off center design give a longer reach for the outside surfaces of the mandrel.

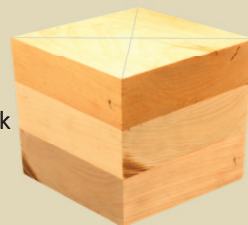
Curved 5/8" post & top

#CLTC58

\$14.95

Make a Mandrel Blank

Laminate our hardwood blanks together with wood glue to make the perfect Mandrel blank for your turning projects. Then drill tap and mount per instructions on page 9



Hardwood Blanks Page 8

Turncrafter Commander Midi Lathes

For all Your Woodturning and Metal Spinning Needs

Packed with features, the Turncrafter Commander™ Midi Lathes are the most advanced, powerful and easy to use lathes in their class. These 10" and 12" workhorses are ideal for metal spinning and will help you more easily and effectively tackle all of your turning projects.



10" Swing Variable Speed Commander™

A great range of variable speed with precision SBC micro control is the killer spec of this quality machine. Its powerful ¾HP motor will provide you with the power, control and versatility that's essential for the most demanding turning projects.

#TCLC10VS

10" Variable Speed Lathe

\$399.95 **Save \$60** \$339.95 (UPS \$50)



10" Swing Multi Speed Commander™

Everything you've ever wanted in a multi-speed 10" midi lathe at a very affordable price. Includes a bed with 18" turning capacity. Cast iron construction and a powerful ¾HP to ensure you years of trouble-free turning and excellent performance. This sturdy lathe will prove the workhorse you need for all of your turning needs from pen turning through 10" bowls.

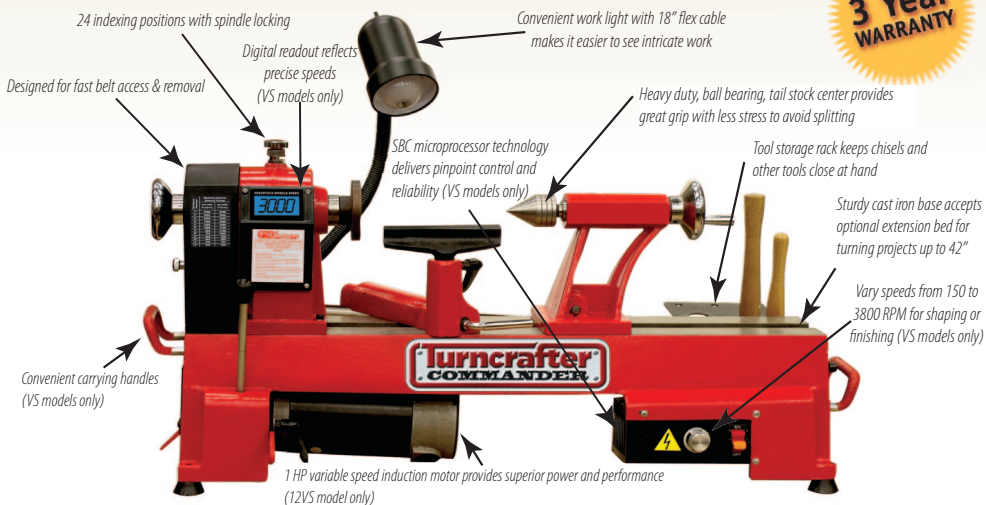
#TCLC10

10" Multi-Speed Lathe

~~\$329.95~~ **Save \$50** \$279.95 (UPS \$50)

12

Penn State Industries 1-800-377-7297



12" Swing Variable Speed Commander™

Powered by a 1 HP high performance induction motor (our largest) and a SBC microprocessor. This lathe delivers precision control and lasting reliability. The 12" swing capacity lets you create larger metal spinnings and wood bowls up to 12" in diameter. Add an extension bed to turn spindles over 40".

#TCLC12VS

12" Variable Speed Lathe

~~\$499.95~~ **Save \$50 \$449.95** (UPS \$60)

Turncrafter Commander™ Specifications	10" Swing Multi Speed Commander™	10" Swing Variable Speed Commander™	12" Swing Variable Speed Commander™
Item no.	#TCLC10	#TCLC10VS	#TCLC12VS
Motor Speeds	Single Speed 110V	Variable Speed 110V	Variable Speed 110V
Motor Power	3/5 HP	3/4 HP	1 HP
Belt Positions	5	2	2
Speeds	650,1000,1450, 2000, 3000 RPM	Variable 500-1800 & 1000-3800 RPM	Variable 150-1900 & 300-3800 RPM
Headstock / Tailstock	1" x 8tpi / #2MT	1" x 8tpi / #2MT	1" x 8tpi / #2MT
Between Centers	18"	18"	18"
Construction	Cast Iron	Cast Iron	Cast Iron
Swing over bed	10"	10"	12"
Weight	83lbs.	82lbs	106lbs
Footprint	31" x 7-1/4"	31" x 7-1/4"	31" x 9-1/2"

INCLUDED with the LATHE

Toolrests(s) w/ 5/8" post	6" toolrest	6" toolrest	6" & 12" toolrest
Faceplate	3" faceplate	3" faceplate	3" faceplate
#2MT Spur Center	included	included	included
Heavy Duty Tailstock Center	included	included	included
Carrying Handles		included	Included

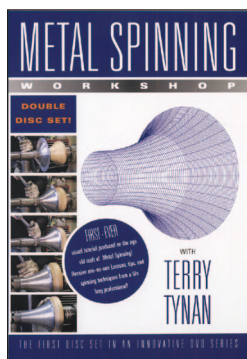
www.pennstateind.com

13

Metal Spinning Workshop DVD's by Terry Tynan

With this innovative DVD series, artisan Terry Tynan keeps the age-old techniques of Metal Spinning alive. He shares over twenty years of professional experience to hobbyists & craftsmen of all levels.

Part #1 Introduction to Metal Spinning



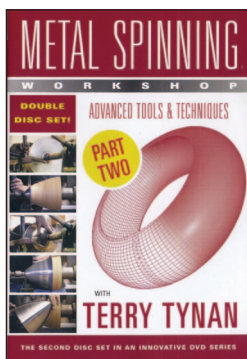
2 DVD Set

#MSXVID1

\$39.99

- How to make your own spinning tools and trimmers
- Beading, Trimming and Truing up
- Converting a wood turning lathe into a metal spinning lathe
- Basic Spinning Techniques
- How to make the 4 basic shapes that provide a foundation of the craft

Part #2 Advanced Tools and Techniques



2 DVD Set

#MSXVID2

\$39.99

- Material preparation, Stretching Lapping Locking
- Spinning into corners, Plug - Split Tools
- Sectional Tooling, Breakdown tools
- Material Comparisons, Multi Operation Spinning
- Parabolic spinning, Spinning on Air
- Advanced Beading

Part #3 Mini Lathe Metal Spinning



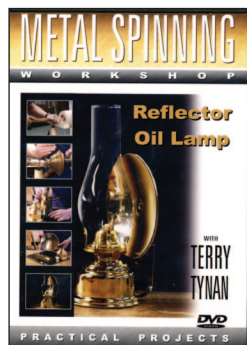
2 DVD Set

#MSXVID3

\$49.99

- Introduction to mini lathe spinning and techniques
- Making your own mandrel
- Project setup on the mini lathe
- Mini Lathe projects including: Planters, Wall clock, Boxes & Lids

Reflector Oil Lamp Project



2 DVD Set

#MSXVID2

\$39.99

- Designing the project
- Hardware requirements
- Prototyping
- Making the mandrel
- Spinning the parts
- Soldering the parts together
- Polishing
- Final Assembly

Get Parts 1, 2 and 3
and **SAVE 30%**

#MSXVID123 Value \$130 \$90.00

Don't forget about our **FREE 45-minute**
Instructional DVD to help you learn the
basics. #MSTDVD

Penn State Industries Makes Shopping Easy

www.Pennstateind.com

1-800-377-7297

8:30am to 8:30pm (ET) Mon-Sat

FAX: 215-676-7603

Penn State Industries

9900 Global Rd.

Philadelphia, PA 19115

Ordering Information

SATISFACTION GUARANTEE

If you are not completely satisfied with your purchase, you may return it within 30 days. We will promptly replace the product, give you credit, or refund your money, whichever you prefer.

SHIPPING INFORMATION:

Most machines and accessories are shipped by UPS, FedEx™ USPS Priority Mail™ or Newgistics™. We reserve the right to ship by any carrier at our discretion. If you require a specific carrier, please let us know. A minimum of \$7.95 shipping and handling fee is charged for any shipment. Shipping charges for machines and accessories are listed in our catalog along with product pricing. Prices are for standard ground deliveries within the continental U.S. excluding Hawaii, Alaska, and Puerto Rico. Call or email us for shipping charges to other destinations.

SALES TAX:

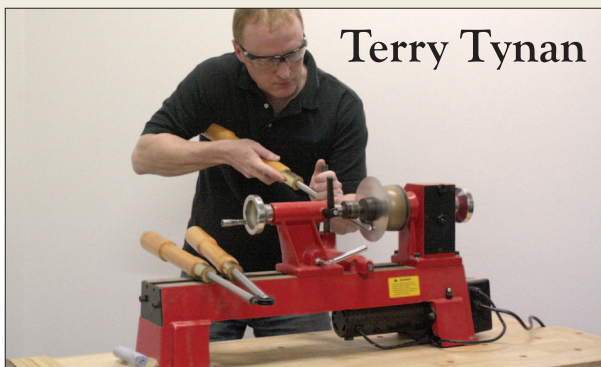
We are required to collect sales tax in Pennsylvania of 8%

RETURNS:

In the event you need to return, exchange, refund or repair an item you purchased from us, we want to make it as easy as possible. Just call our Customer Service Department. You will be issued a return authorization number (RMA) which must appear on the outside of your return carton. All returns must be shipped pre-paid. Items being returned for a refund must be packed in the original box. Include a copy of your invoice. Clearly state the reason for your return in writing.

WARRANTY INFORMATION:

Penn State Industries warrants PSI Woodworking products against defects in materials and workmanship for 2 years from the date of purchase. This warranty applies to the original purchaser of the product and is limited to repair or replacement of the product or its parts at the option of Penn State Industries. Excluded are parts that have been misused, abused, altered or consumed by normal operation of the machine. Also excluded are direct or consequential damages to person, property or materials. Replacement parts are warrantied to the end of the warranty period.



Terry Tynan

Terry is an author, a video producer and instructor. His skills are in high demand to make world class spun products for consumer and industrial use. Terry's proud to bring his metal spinning experience, knowledge and skills to partner with Penn State Industries and bring Metal Spinning to the wood-turning hobbyist.

At the age of 15 with a metal spinning company based in his home town of Halifax in Northern England. Six years later he left the company to complete a 4 year art and design course. After graduating, he worked for a brief time as a graphic designer, but within 3 months he took a position at another metal spinning workshop. In 1995 he started his own metal spinning business mainly producing aluminum and copper cookware, as well as supplying local craftsmen with their metal spinning needs. In 2002 he moved to the USA. He has spun a multitude of custom parts for many commercial fields, in sizes from ½" to 132" diameter. Using some of the most difficult materials to spin. From complex Titanium Jet engine parts to simple funnels.

We've partnered with Terry to design our SpinCrafters™ line of Metal Spinning supplies. Together we've developed a unique turnkey Starter Package that includes quality, affordable spinning equipment and projects that will get you up and running quickly. We are proud to bring you this new opportunity to expand your creativity into metal spun projects. We're sure you'll find metal spinning rewarding, satisfying, challenging and addictive! (See page 3 for starter set)

Use the QR reader on your smart phone to read this code and see our Metal Spinning Video



www.pennstateind.com

15

Spin Gorgeous Metal Projects



Use your existing wood lathe

To easily get started metal spinning

Spin countless metal projects

Including bowls, bells, pots, vases, lamps, plates and much more



Mix metal and wood together

to add a flair to your woodturning



Reproduce

Your custom profile in an
Indefinite number of exact copies



Make project in different metals

like aluminum, brass, copper, pewter, silver & more to create a different look

© 2011 Penn State Industries • Philadelphia, PA 19115