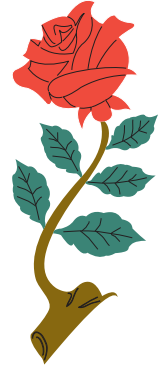




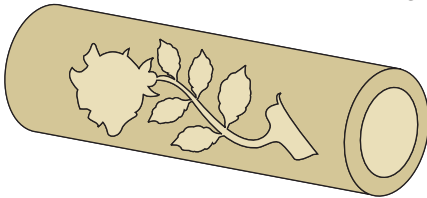
# Rose Inlay Kit Instructions

For PSI kits: WXLAZ048 , WZLAZ0438



## Kit components

- 1: 1 x Barrel with laser cutout
- 2: 1 x Color Rose laser cutout
- 3: 1 x Leaf section laser cutout with 5 green leaves
- 4: 1 x Brown laser cut stem



Barrel



Color Rose



Leaf section  
with 5 green leaves



Brown stem

## Step 1:

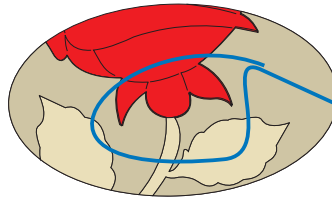
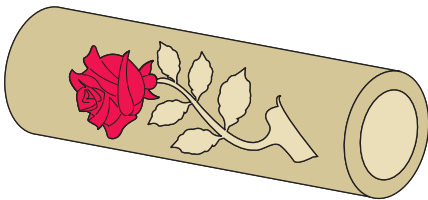
Remove all components from the plastic bag and place on a clean work surface. Please note that the components are small and you can loose them quite easily.

## Step 2:

Take the barrel with the laser cutout and slide the brass tube into it. **Please do not use any glue** at this stage, this is only to assist you with the assembly process.

## Step 3:

Take the color rose laser cutout and place in into the corresponding cutout.



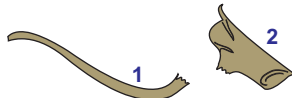
This section of the rose needs to be inserted first and then lower down the other end and push in with pen blank until fully inserted.

## Step 4:

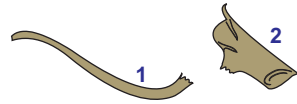
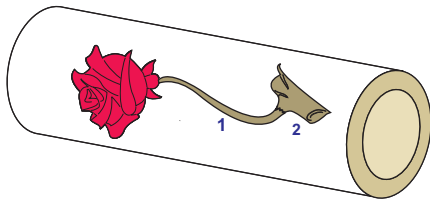
Take the brown rose stem and break it at its weakest point or as per indication mark in the illustration.



Indication mark



Broken Rose stem

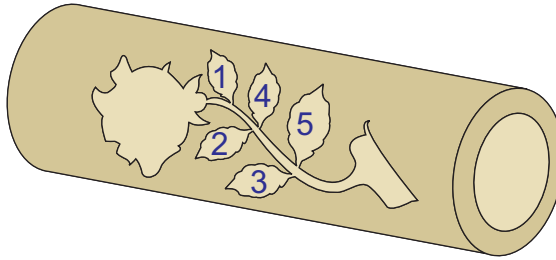
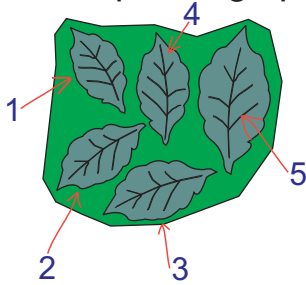


Broken Rose stem

Insert the stem pieces in the order that they are numbered. Insert piece nr 1 but do not push the broken end in all the way but instead let it stick out a bit and then insert piece nr 2. Now that both pieces are in place use a pen blank to push them into place so they are level with the barrel surface.

## Step 5

Take the leaf section and remove the leaves one by one and insert them into the corresponding openings, the order of placement is not important.



## Step 6

Remove the brass tube and put a small drop of thin CA on each inserted part. Try to keep the CA glue to the edges of the inlaid pieces so you can fill the laser cut lines with dark wood dust for contrast before you finish the pen.



Black laser cut lines will be filled with dark wood dust for contrast.

## Step 7

Now you can trim / cut / sand the barrel to size and glue the brass tube into the barrel with a glue of your choice and please give it enough time to dry before turning the barrel into shape. Try to sand the barrel round and smooth before you use a skew or any other tool to finish your pen.