

Acrylic Peppermill Grinder



CONTENTS

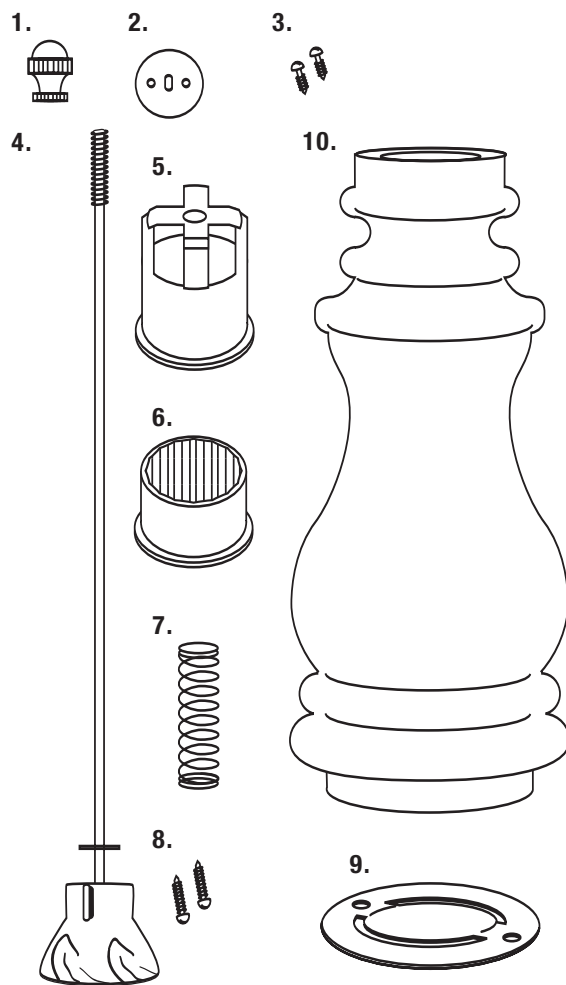
- | | |
|-----------------------------------|-----------------------------|
| 1. Knurled Nut | 6. Grinder teeth |
| 2. Drive Washer | 7. Spring |
| 3. 2 – short screws | 8. 2 – long mounting screws |
| 4. Grinder base, shaft and washer | 9. Bottom Plate |
| 5. Plastic Mantle | 10. Acrylic Container |

REQUIRED ACCESSORIES:

- 1/4" Drill Bit
- 1-1/16" Forstner Bit
- 1-3/8" Forstner Bit
- 1-1/2" Forstner Bit
- 1-7/16" Forstner Bit
- 1-3/4" Forstner Bit
- Woodworking chuck with Step Jaws

WOOD REQUIRED:

- Upper Blank: 2" to 3" square x 1-1/8" H
- Base (Lower) Blank: 2" to 3" square x 1-7/16" H
- Or use:
PSI available wood blanks



DRILLING & TURNING THE BLANKS:

UPPER BLANK: (see diagram A)

Locate the center of the blank and drill the sequential holes:
 Drill a 1-7/16" hole to 5/16" deep
 Drill a 1/4" hole through the blank
 Mount the blank with the 1-7/16" hole over the step jaws of the chuck. Lock firmly in place on the lathe.
 Turn the wood to the profile of your choice. Be sure finished piece is 1-1/8" high
 Sand and polish the wood.

BASE (LOWER BLANK) (see diagram B)

Be sure blank is 1-7/16" high
 Round the base stock between centers.
 Drill a 1-3/4" hole to 1/4" deep for the top of the base
 Drill a 1-1/2" hole on the opposite end to 1/4" deep.
 Drill a 1-1/16" hole through the blank.
 Mount the blank on the step jaws in the chuck, lock in place
 Turn the wood to a profile of your choice. Sand and polish

Diagram A

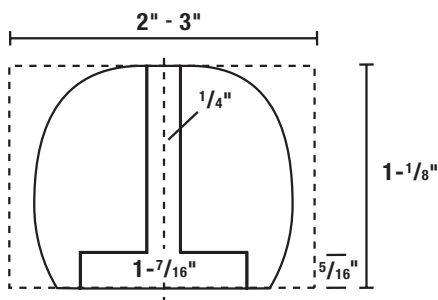
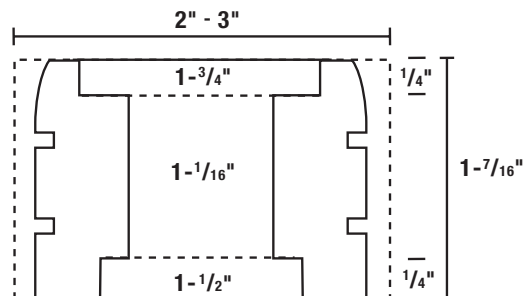


Diagram B



ASSEMBLY**UPPER BLANK:**

Sand and wax the large 1-7/16" hole of the upper blank to reduce friction. Center the drive washer (2) inside the recessed hole, over the 1/4" hole secure to the wood with 2 screws (3).

LOWER BASE:

Insert the white plastic mantle, (5) small dia. first into the smaller 1-3/8" recess of the lower blank. Mark the centers of the 2 notches with an awl (or a sharp pointed object). Note that the point of the awl will allow for easy positioning and starting the screw thread.

Insert the spring (7) & grinder teeth (6), small diameter first, into the plastic mantle with the notches located over the 2 screw holes.

Insert the grinder shaft assembly (4) through the grinder teeth (6) into the hole of the mantle until the grinder base sits inside the mantle (5). The washer will lean against the spring (7) on the shaft (4).

Insert the bottom plate (9), raised panel upwards, into the bottom hole. Align the recess and secure with 2 screws (8).

CONTAINER:

Place the 1-7/16" recess of the upper blank over the top rim of the acrylic container. Insert the grinder shaft (4) (now threaded through the base) through the upper blank and drive washer (2). Screw the knurled nut (1) onto the threaded top of the shaft. The upper blank should rotate easily on top of the acrylic container and turn the shaft and grinder against the grinding teeth – If it doesn't, sand and wax the recess to allow for easier movement.

Remove the knurled nut and top blank to fill the container with peppercorns. Tighten or loosen the knurled nut to adjust the coarseness of the pepper grind.

