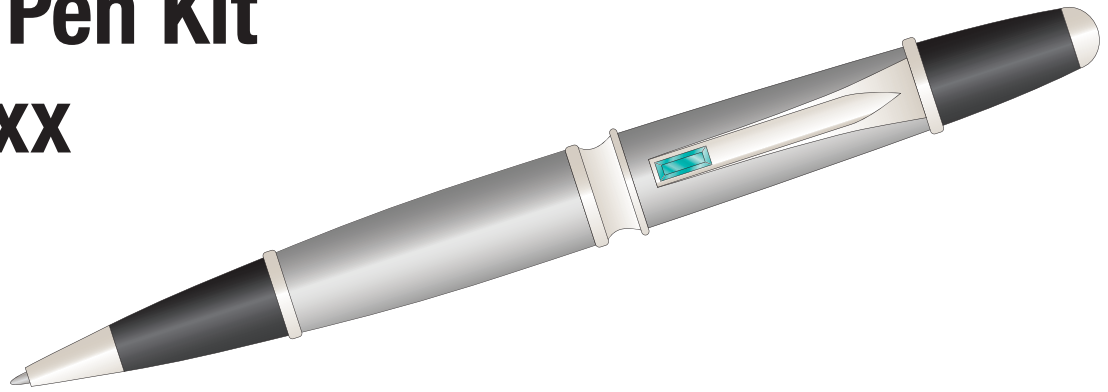


PATRIZIO Pen Kit

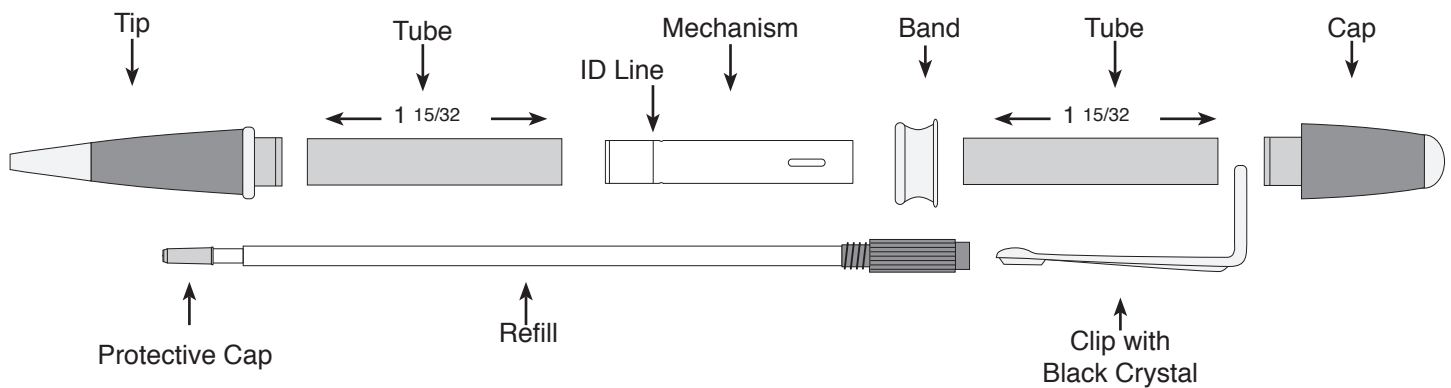
PKPATDSxx



Required Accessories

- 7mm, Pen Mandrel
- 7mm Drill bit #PK-7mm
- 3 Pcs. bushing set #PKPATDSBU
- 7mm barrel trimmer
- Pen uses Cross® style Refill
- 2 Part epoxy glue or Insta Cure (cyanoacrylate) Glue

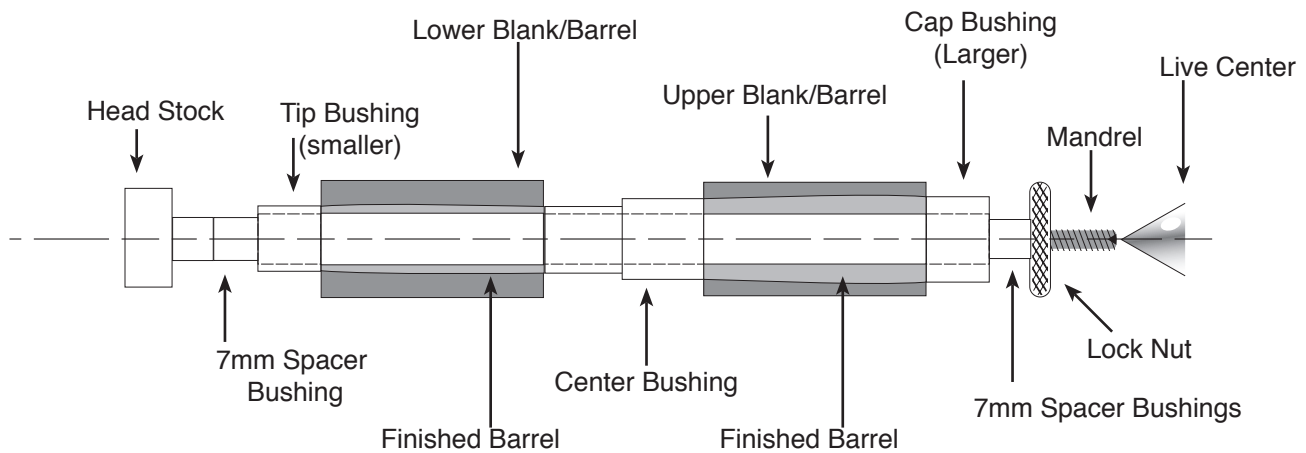
DIAGRAM A - Parts List



Preparing the Blank

- Cut blanks to the size of the brass tube (add 1/16" for trimming)
- Drill 7mm holes through blanks
- Spread the glue over the tube. Insert the tube into the blank with a twisting motion to spread the glue evenly inside. Center the tube lengthwise in the blank.
- When glue dries, use a 7mm barrel trimmer to square the ends. Trim the wood down flush to the brass tube

DIAGRAM B - Turning the Blanks



Turning The Blanks

- Mount the bushings and blanks onto the mandrel according to diagram B.
- Turn the wood down close to the size of the bushings. Sand the wood down to the bushing diameter
- Finish the wood with your choice of polish.

Assembly

NOTE: Layout Finished parts according to Diagram A

- Press the tip into the smaller dia. of the lower barrel
- Press the mechanism into the opposite end of the lower barrel. Stop at the indentation line.
- Remove the protective cap off the refill. Insert and screw in the refill through the mechanism.
- Insert the center band over the chrome end of the mechanism with the narrow end first.
- Position the clip into the projection on the end cap. Press into smaller dia. of the upper barrel.
- Place the upper barrel over mechanism. Twist the barrel clockwise to extend the refill.

DIAGRAM C - 3 Bushings Set #PKPATDSBU

