

# Chrome Press Top Pepper Grinder

## Kit Features:

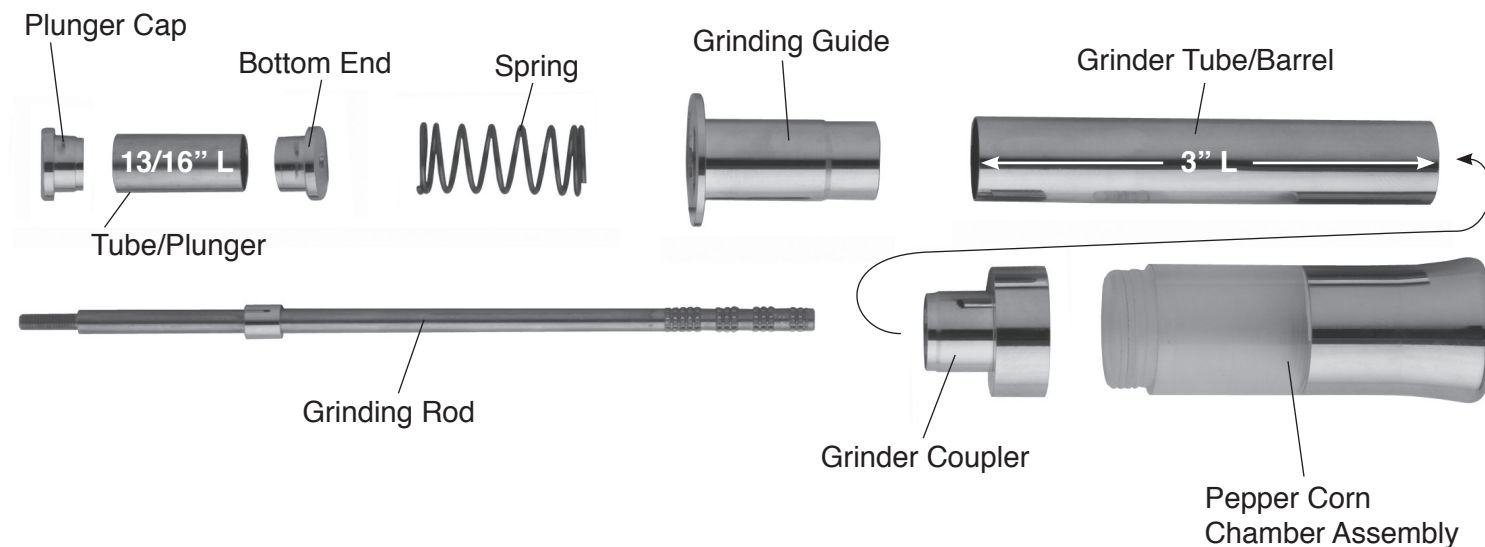
- Easy to turn with a straight and contoured barrel
- Minimum parts - easy to assemble
- Turned wood plunger
- Vue-Through Window
- Overall Length: 6-1/2"
- Smooth one hand grinding mechanism

## Required Accessories:

- 7mm Pen Mandrel
- Drill Bits: 10mm #PK10-10, 9/16" #PKDB916
- Bushing set(4 pc) #PKGRIND8BU
- Barrel Trimming set: #PKTRIMKIT (Use 10mm shaft, & 7mm shaft)
- Live Tailstock Center
- 2 Part Epoxy Glue or Insta Cure (Cyanoacrylate) Glue
- Pen Blank: Minimum Size - 1-1/8" to 1-1/4" x 3-1/4" L (for barrel)  
5/8" x 1"L (for plunger)



DIAGRAM A / PARTS LAYOUT



## Preparing the Blanks

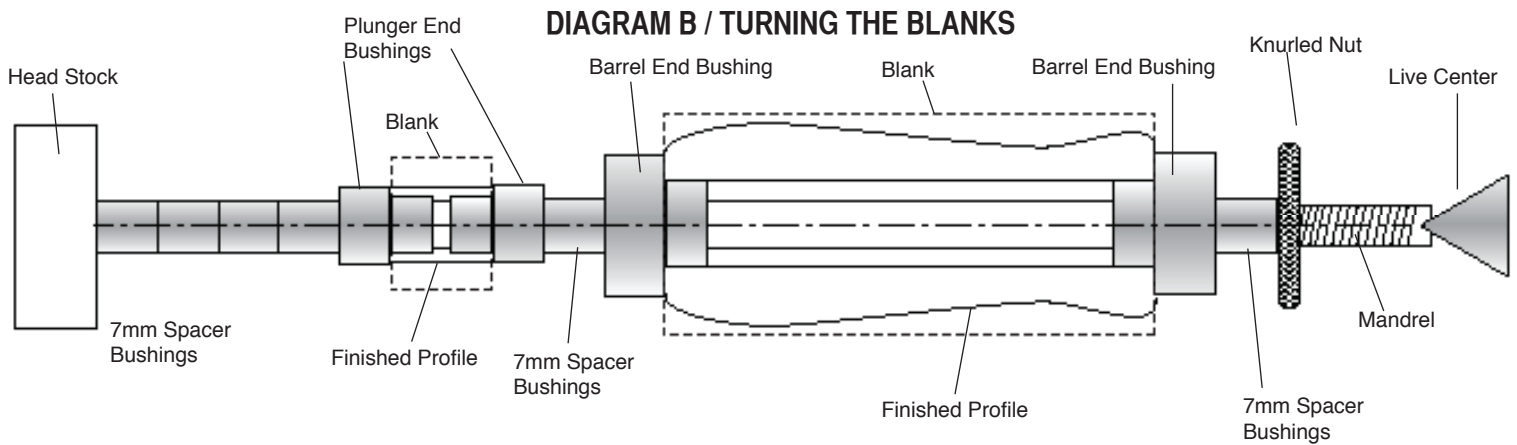
### Barrel:

- Cut the 1-1/8" x 3/4" blank to the length of the chrome grinder tube (add 1/16" for trimming).
- Drill a 9/16" hole through the center of blank.
- For better adhesion, sand the O.D. of the chrome tube.
- Glue the Grinder tube into the hole. Let dry.

**NOTE:** For best results, make a barrel trimming sleeve. Drill a 1/4" hole through the center of the sleeve to the length and I.D. of the tube. Use this sleeve with a 7mm barrel trimmer shaft. Trim to the tube (or use a sander).

### Plunger:

- Cut the blank to the length of the brass tube (add 1/16" for trimming).
- Drill a 10mm center hole through the blank.
- Glue the tube into the hole. Let dry.
- Use a 10mm barrel trimmer shaft. trim to the tube.



### Turning the Blank

- Mount the bushings and blanks according to diagram B.
- Thread on the knurled nut and hand tighten to hold all components in place.
- Slide the tailstock up snugly against the mandrel shaft inserting the live center point into the mandrel dimple, lock in place.
- Hand tighten the quill adjustment to firm up the mandrel. (DO NOT overtighten, it could damage the mandrel).
- Using sharp tools, turn the blanks down close to the bushing diameter. For the grinder barrel ( turn to a profile of your choice) For the plunger ( turn a straight line from bushing to bushing).
- Sand the blanks down to be flush with the bushings gradually increasing the sandpaper grits.
- Finish the plunger and barrel with your choice of polish. Allow sufficient time for the polish to cure. Refer to polish instructions.

### Assembly

- Layout parts according to diagram A.
- Press the plunger cap into either end of the plunger.
- Press the bottom end into the opposite end of the plunger.
- Press the grinder guide into the upper end of the grinder barrel.
- Press the grinder coupler into the opposite end of the grinder barrel.
- Drop the spring into the opening in the grinding guide.
- Insert the grinding rod, threaded end in first into the opening in the grinder coupler, through the grinder barrel out through the grinding guide and spring.
- Thread the bottom end of the plunger over the rod, tighten.
- Fill the pepper corns into the chamber assembly.
- Insert the rod through the corns and screw the coupler onto the chamber assembly.
- The grinder is ready to use by pressing on the plunger to grind the pepper.

### Diagram C / Bushings #PKGRIND8BU

