

Vertex Roller Ball / Fountain Pen

PKFP50XX • PKFP51XX

REQUIRED ACCESSORIES:

- 7mm, Pen Mandrel
- 2 pc Bushing Set -#PKFP5000BU
- 10.5mm Drill Bit #PK105mm
- Barrel Trimmer #PKTRIM7
- Barrel Trimmer Sleeve #PKMAJJRBS (use smaller dia sleeve with 7mm trimmer)
- 2-part epoxy glue or insta-cure (cyano acrylate) glue
- Overall length: 5-5/8"

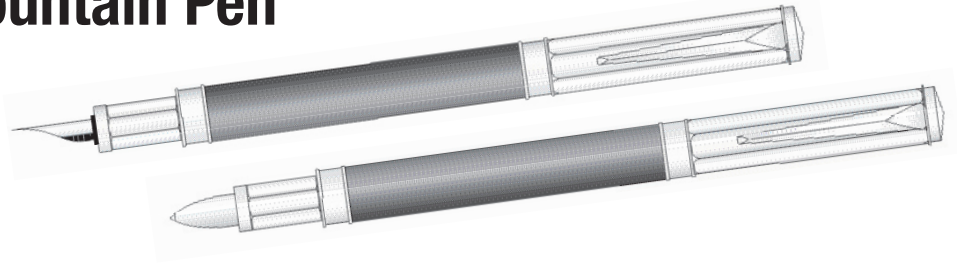
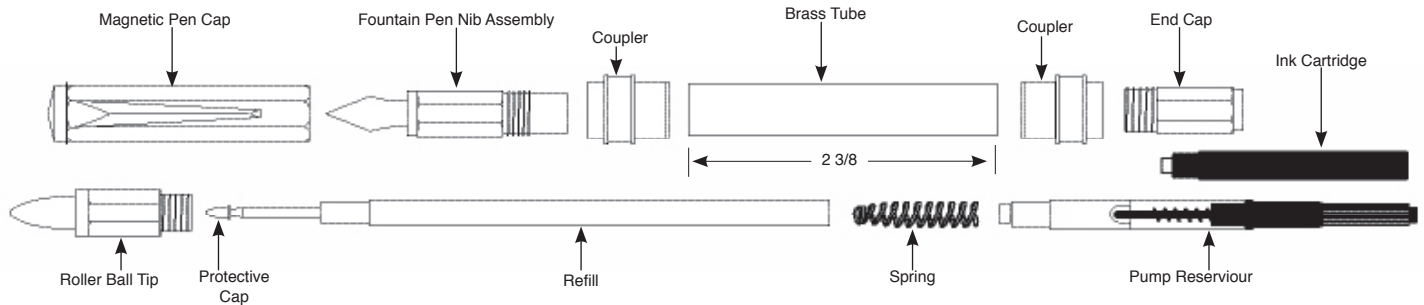


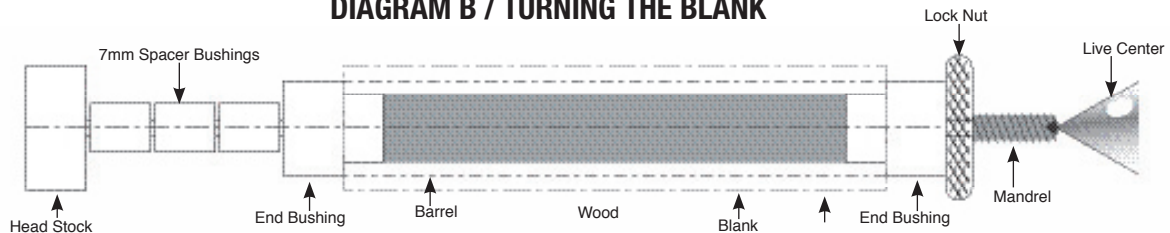
DIAGRAM A / PARTS LIST



PREPARING THE BLANK:

- Cut 5/8" square blank to the length of the brass tube. (add 1/16" for squaring off).
- Drill a 10.5mm center hole lengthwise through the blank.
- Spread glue over the tube, insert into the blank with a twisting motion to spread the glue evenly inside.
- When the glue dries, use the trimmer sleeve over a 7mm barrel trimmer and insert inside the tube. Trim the wood down to the brass tube

DIAGRAM B / TURNING THE BLANK



TURNING THE BLANK:

- Mount the bushing and blank onto the mandrel according to Diagram B.
- Turn the wood down, close to the size of the bushing. Sand the wood down to the bushing's diameter
- Finish the wood with your choice of polish.

ASSEMBLY:

NOTE: Layout finished parts according to Diagram A.

- Press couplers, narrow end in first into each end of the barrel.
- Screw the end cap into either end of the barrel.

FOR ROLLER BALL:

- Drop the spring, wide end in first into the opening at the barrel.
- Remove the protective cap and drop the refill down in. Screw the tip over the refill.

FOR FOUNTAIN PEN:

- Affix the cartridge or ink pump onto the back end of the fountain nib. Screw in this assembly into the barrel

FINAL ASSEMBLY:

- Slide the magnetic pen cap over the front end. The magnet inside the cap will keep the pen closed together.
- The cap will "post" magnetically over the end cap.

DIAGRAM C / BUSHINGS

#PKFP5000BU

