

4 Piece Cheese Knife Kit

Kit Features

- Easy to Turn Closed End with Bushing using the Handle Anything System
- Can be turned using alternate method without Handle Anything (Section 4)
- Available as a set with included presentation box
- No ferrule or tenon needed
- Minimal Parts—easy to assemble

Required Accessories

- Handle Anything Chuck: #PKHA01*
- 3/8" x 16tpi Mandrel: #PKHA02*
- Drill Bit: #PKDB12
- Bushing Set: #PKMAJBU (Cap Bushing)
- Live Tailstock
- 2 part Epoxy (CA is not recommended)
- Food safe polish or buffing oil
- Blank Minimum Size: 1-1/2" x 1-1/2" x 3"L (3-3/4"L for Prong Knife)

*available separately or included with #PKHABS



1) Preparing the Blanks:

- It is highly recommended to read and understand the instructions fully before cutting or turning this project.
- Blanks should be long enough to feel comfortable as a handle. 3" minimum length is recommended. 1/4" to 1/2" of this length will be needed for support section. The Prong Knife is longer and will look nicer with a slightly longer handle; cut blank to 3-3/4"
- Drill 1/2" hole 7/8" deep in one end of blanks. You may wish to use a sharp tool to scratch inside the hole to provide grip for glue.
- **If you are not using Handle Anything Chuck, skip glue step for now and proceed to Section 4.**
- Mix a small amount of epoxy. Smooth epoxy into hole so hole is coated in a thin layer. Spread a light amount onto Knurled Insert. Smooth so epoxy is pushed into the knurling. Push insert into hole until it bottoms out and allow glue to cure. A 3/8" bolt is helpful here as an insertion tool.

Diagram B / Parts Layout

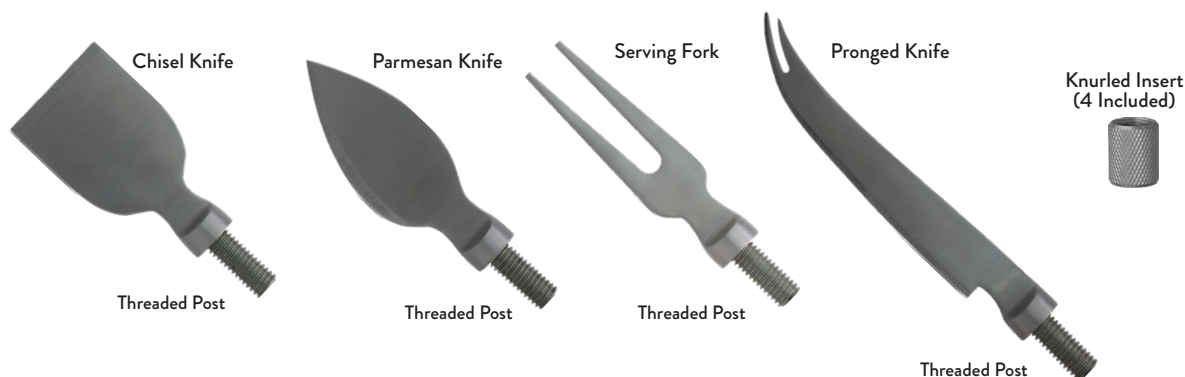
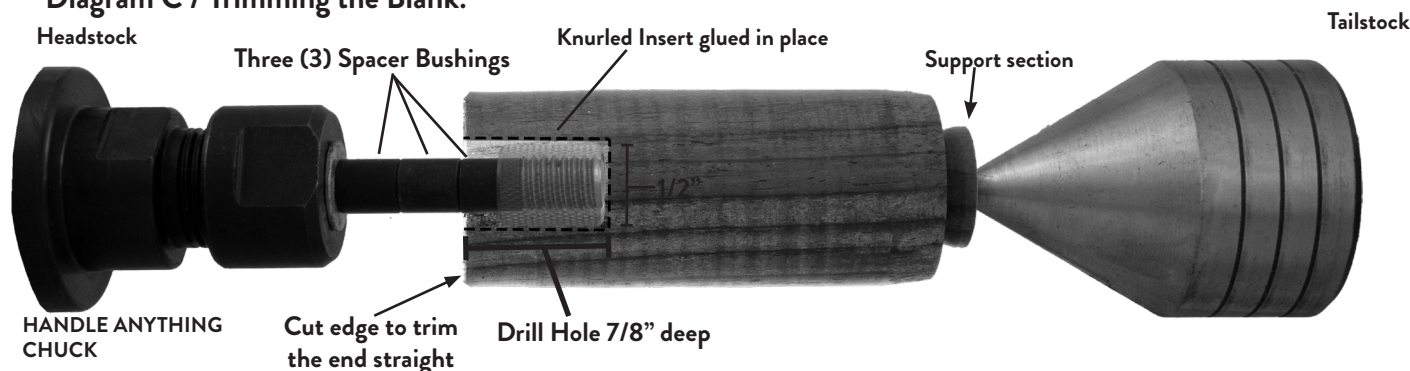


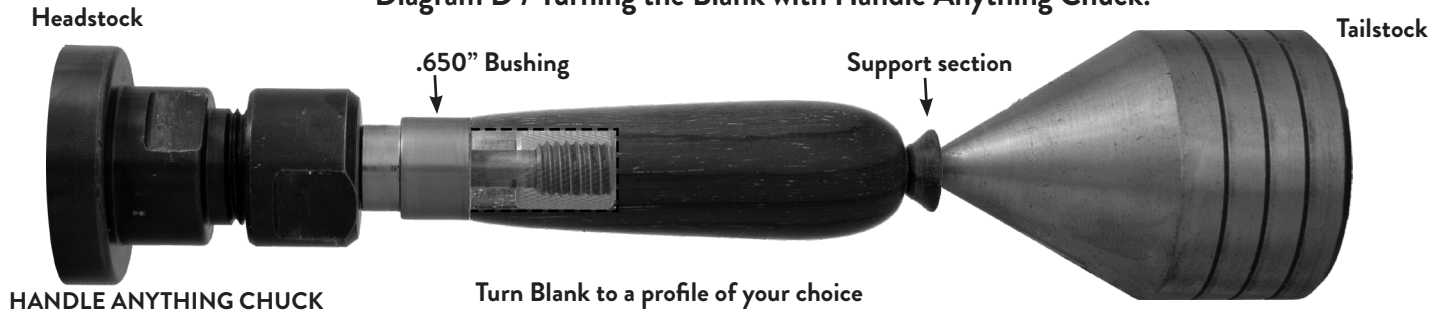
Diagram C / Trimming the Blank:



2) Trimming the Blank (This can only be done with Handle Anything Chuck):

- Slide three standard bushings (PKM-BUSH3) as spacers onto the back of the 3/8" Mandrel Rod. (See Diagram C).
- Thread the blank onto Mandrel until tight. Slide Mandrel into Chuck.
- Bring Tailstock up to the blank and advanced tailstock point into end of blank.
- NOTE: Do not try to bend the blank to force the tailstock to a pre-marked center, it will cause the final piece to be off. Allow the Tailstock to naturally penetrate at the center of rotation on the mounted blank.
- Tighten the collet using 7/8" wrenches and re-adjust Tailstock.
- Rough turn blank. Reduce a minimum of the last 1/4 inch of length as a support section.
- Use a parting tool or skew to trim the Headstock end of the blank so it is 90° to the side of the blank. Only remove enough material to make sure edge is trimmed and straight. Do not remove too much or you might reduce the depth of the hole too much.
- Loosen Collet and remove Mandrel Rod.
- Slide the three standard bushings off.

Diagram D / Turning the Blank with Handle Anything Chuck:

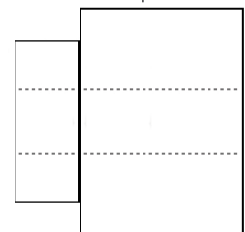


3) Turning the Blank with the Handle Anything Chuck:

- Mount the bushing and blank according to Diagram D. To ensure tightness, do not fully thread the Blank onto the Mandrel at first and leave the Chuck Collet only hand tight.
- Slide the Tailstock up and return point to the same spot in the support section.
- Lock Tailstock and hand tighten the quill adjustment to make sure all parts are firmly against the Chuck. Tighten Collet with 7/8" wrenches and turn handle to fully tighten against bushing.
- Using sharp tools, turn the blank down close to the bushing diameter. Turn the barrel straight or to a profile of your choice. Do not part off the Support section until almost all finishing is done.
- Sand the blank down to be flush with the bushing, gradually increasing sandpaper grits.
- Carefully part off the support section, either with a parting tool or skew.
- Note that once Tailstock support is gone, it is not advisable to place too much sideways pressure. Sanding and finishing should be done with less pushing and more gripping pressure.
- Sand the end of the Barrel, increasing grits and moving up handle with higher grits to blend in.
- Finish the barrel using your choice of polish. Keep in mind that food related items are subject to washing. Finishes should be able to survive hand washing. #LBUFFOIL is an example of a food safe finish meant to be used on items subject to these conditions.
- Allow sufficient time for the polish to cure—refer to polish manufacturer's instructions.

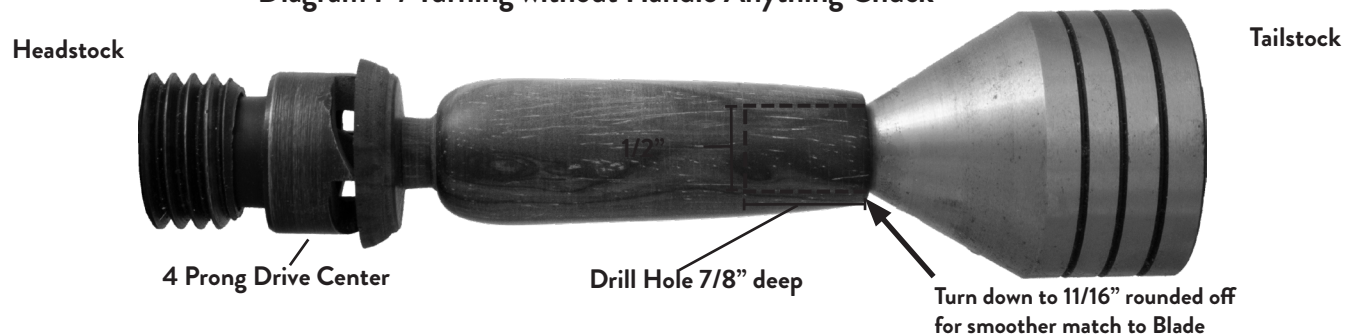
Diagram E/ Bushing

#PKMAJBU
(Cap Bushing)
0.650"



Use this side

Diagram F / Turning without Handle Anything Chuck



4) Turning without Handle Anything Chuck

- Mark the center on the butt end of the blank by drawing lines from corner to corner. Use a hammer to knock the 4 prong drive center into the butt end of the blank until prongs make contact. Mount Drive center and blank on lathe.
- Slide the Tailstock up and insert center into hole. It will naturally center.
- Lock Tailstock and hand tighten the quill adjustment Do not over tighten as it can split the blank
- Using sharp tools, turn the barrel straight or to a profile of your choice. Turn the blade end to around 11/16" and round it to help match the transition to the Blade.
- Sand the barrel. Do not part off the Support section until almost all finishing is done.
- Carefully part off the support section, either with a parting tool or skew.
- Sand the butt end of the Barrel by hand, increasing grits and moving up handle with higher grits to blend in with sanding done on the lathe.
- Finish the barrel using your choice of polish. Keep in mind that food related items are subject to washing. Finishes should be able to survive hand washing. #LBUFFOIL is an example of a finish meant to be used on items subject to these conditions.
- Glue insert into the blank. Refer to instructions on first page.

5) Assembly:

- Once all turning is done and polish is fully cured, Join the blade and the handle using the threaded post.

