

# PKATOMKC Key Chain Atomizer Kit

## Kit Features

- 24kt gold-plated brass components
- Pump-operated perfume atomizer
- handy flex bottle filler included
- overall length: 3 in.

## Required Accessories

- 7mm pen mandrel
- **PKATOMKCBU** 2 pcs. bushing set
- **PKDB12** 1/2" drill bit
- **PKTRIMKIT** Barrel trimmer. Use 10mm shank and sleeve provided with bushing set.
- 2-part epoxy glue or insta-cure (cyanoacrylate) glue

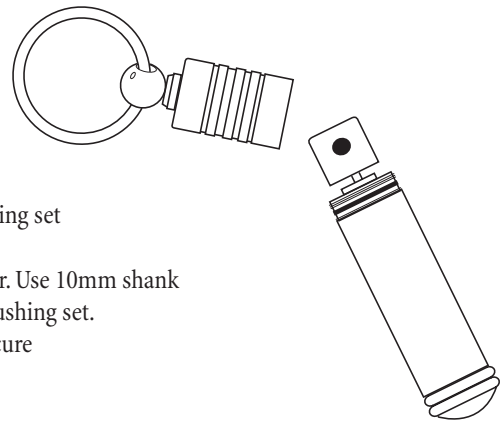
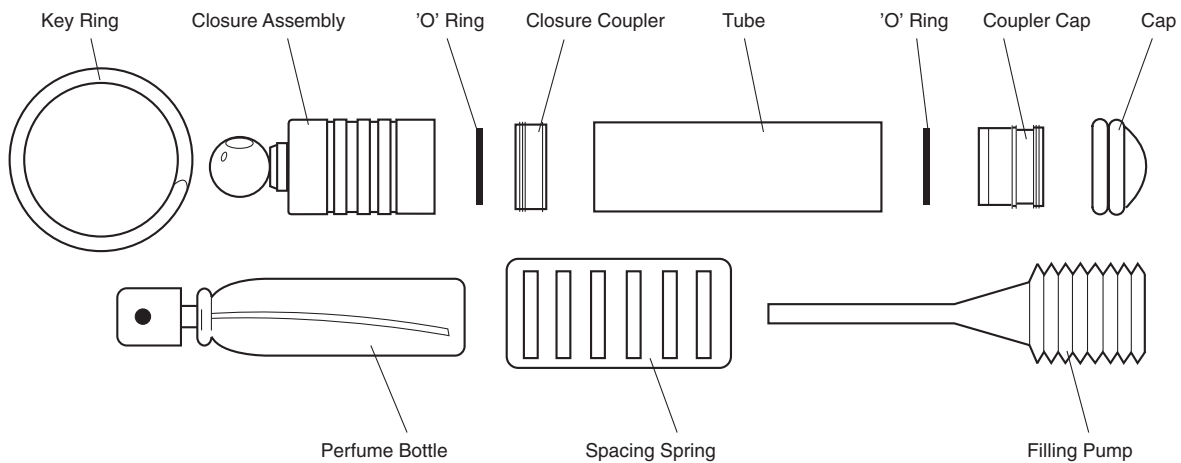


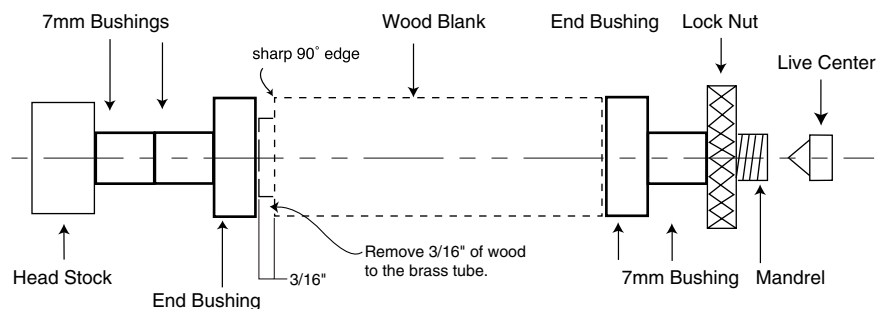
Diagram A- Parts Layout



## Preparing the Blank

- Cut 1" square to the length of the tube (add 1/16" for squaring off).
- Drill a 1/2" hole lengthwise through the blank.
- Glue the tube inside the blank.
- When the glue dries, trim the ends of the blank.
- To trim the blank, slip the chrome plated tube (provided in bushing bag) over the 10mm barrel trimmer shaft.
- Trim the wood blank in the usual manner.
- Trim the wood flush with the brass tube.

Diagram B- Turning the Blank



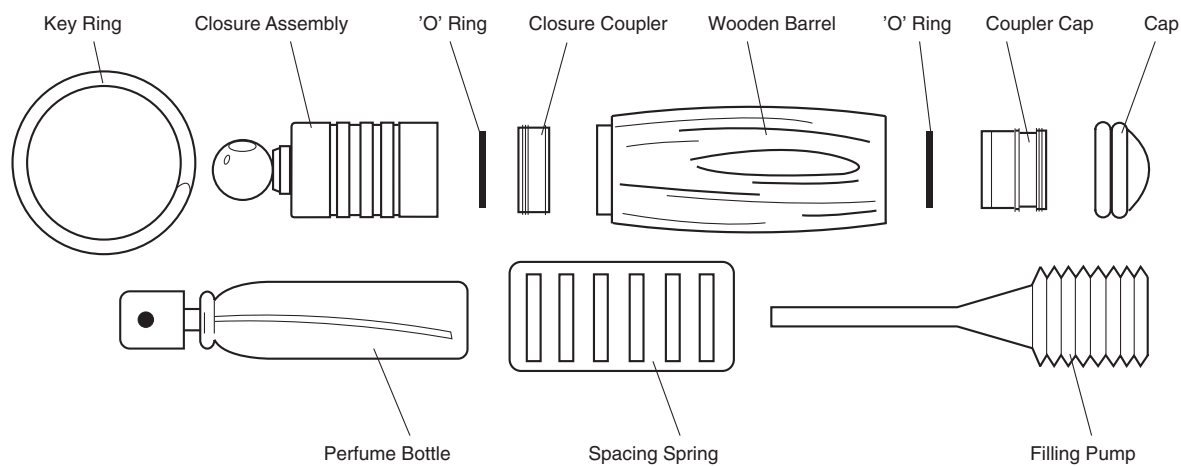
### Turning the Blank

- Place 7mm spacer bushings onto the mandrel. (This may not be necessary with the PSI Maxi-Mandrel).
- Insert one of the end bushings, wide end on first. Slip the wood blank on next; follow with the other bushing, narrow end in first.
- Place another spacer bushing on (if needed), then the lock nut. Bring the tailstock live center to engage the mandrel and secure.  
**Note:** Overtightening the lock nut or tailstock can damage the mandrel shaft.
- Turn the blank between the bushings to your chosen profile.

### Removing the Wood from the Closure Coupler

- Make a pencil mark 3/16" in from the bushing (use either end).
- Use a parting tool to remove the wood all the way down to the brass tube. Be sure to form a sharp 90° corner on the wood. If your profile is curved at this end it will be necessary to remove a little more wood from the outside diameter to meet the closure coupler exactly. A caliper will be helpful here.
- Sand and finish the barrel with your choice of polish and wax.

Diagram C- Assembly



### Assembly

- Layout parts according to Diagram C
- Use a drop of glue over the outer surface of the exposed tube. Slide the closure coupler with inner recess in first. Press in, allow the glue to dry.
- Press the coupler cap, recessed end first, into the opposite end of the barrel. Press to the shoulder.
- Slip an 'O' ring on each end over the threads to rest in the groove.
- Tightly thread the end cap over the coupler.
- Roll and insert the spacing spring into the open barrel.
- Remove the bottle, and unscrew the spray atomizer. Use the filling pump to inject your perfume into the bottle. Re-assemble the atomizer.
- Slide the bottle into the barrel opening.
- Attach the key ring onto the closure and screw on the closure. Your key chain perfume atomizer is now ready to use.

### Bushing Setup PKATOMKCBU

