

Diva Pen Kit (No Press Style)

Kit Features:

- No Press assembly - parts screw together
- Compatible with turned or poly-clay barrels
- Easy to exchange tube and components
- Elegant, slim, feminine design
- Fashionable 8 crystal band and charm in variety of colors
- Uses Parker™ style refill (gel compatible)
- Overall length: 5 - 1/16"

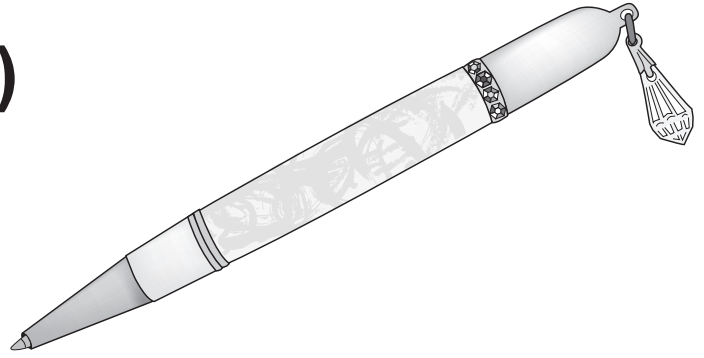
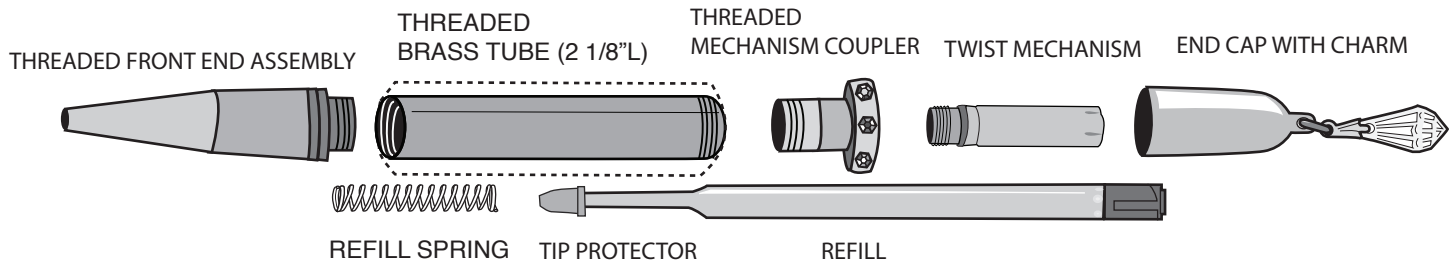


DIAGRAM A / PARTS LAYOUT



WOODTURNING INSTRUCTIONS

Required Accessories: (Wood Turning)

- 7mm Pen Mandrel
- 10mm Drill Bit #PK10-10
- 2pc. Bushing Set #PKCHPEN-BU
- 3/8" Barrel Trimmer #PKTRIMKIT (use 3/8" shaft, not 10mm)
- 2-part Epoxy or Thick CA (cyanoacrylate) glue

PREPARING THE BLANK (Wood Turning)

- Cut a 3/4" or 5/8" pen blank to the length of the pen tube, plus 1/16" for squaring off.
- Drill a 10mm hole lengthwise through the blank.
- Spread glue over the tube, insert the tube into the blank with a twisting motion to spread the glue evenly inside. Be careful that glue does not get inside of tube to prevent the threads from clogging.
- Center the tube lengthwise inside the blank.
- When the glue is dry, square the ends of the blanks, making sure the trimmed ends are 90° to the tube. Use a 3/8" Barrel Trimmer or a pen blank squaring jig with 3/8" trimming sleeves on a disc sander. Take the excess material down flush to the ends of the tubes. Be very careful not trim into the brass tube since this may damage threads and make kit unusable.

TURNING THE BLANK

- Mount the bushings and blanks according to diagram B.
- Thread on the knurled nut and hand tighten to hold all components in place.
- Slide the Tailstock up snugly against the Mandrel shaft, inserting the live center point into the Mandrel dimple. Lock Tailstock.
- Hand tighten the quill adjustment on the tailstock to steady the mandrel. Do not over-tighten, it could damage the mandrel shaft.
- When using Mandrel Saver, there is no need for extra spacer bushings or the knurled nut. Slide tailstock directly against bushings and tighten until blank and bushings are secure.
- Using sharp tools, turn the blank down close to the bushing diameter.
- Sand the blank down to the bushings, gradually increasing sandpaper grits.
- Finish the barrel using your choice of polish. (refer to polish instructions).

DIAGRAM B / Mounting the Blank

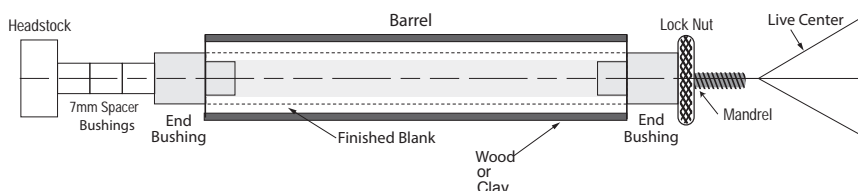
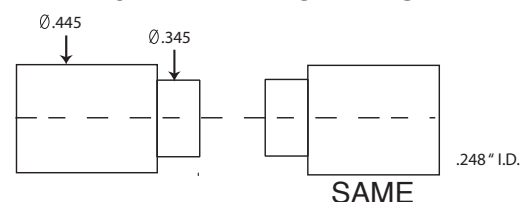


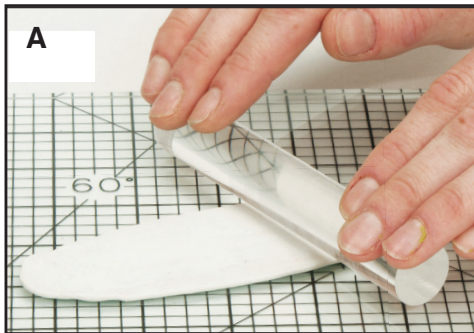
DIAGRAM D • #PKCHPENBU



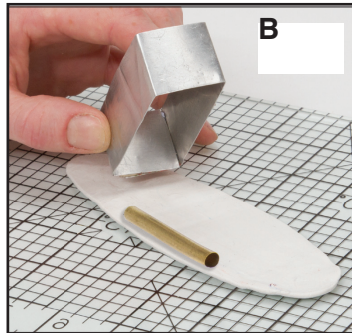
POLYCLAY INSTRUCTIONS (with clay decoration)**Required Accessories: (PolyClay)**

- PloyClay Acrylic Roller #MCM-AR
- PloyClay Border Cutter #MCM-CL (3/8" size)
- PloyClay Slicing Jig #MCM-SJ
- PloyClay Slicing Blade #MCM-BLA
- PloyClay Cutting Board #MCM-CBD
- PloyClay Mandrel #MCM-MAN
- PloyClay Sanding Set #MCM-SAP

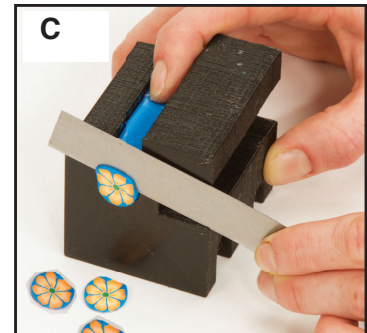
For More Information: Refer to Pen Making Instructions online at http://www.pennstateind.com/library/POLYCLAY_INS.pdf



A
Roll base layer to thin layer



B
Cut to the side of tube, wrap slice around tube



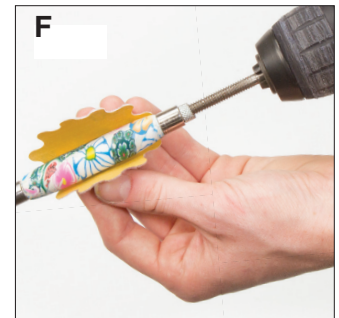
C
Cut thin layers of cane for decoration



D
Mount bushings and tube on mandrel - apply cane around tube. Mold to match bushings



E
Bake in oven at 275° for 30 minutes - allow to cool (OK to water cool)



F
Mount mandrel in hand drill to sand

For this no press Pen you can thread on the pen components for sizing the final diameter of the clay at the ends of the tube. However you must remove the component prior to curing in the oven

ASSEMBLY (Wood or Clay Barrels)

- Line up the parts according to Diagram A
- Screw the Mechanism Coupler into either end of Barrel.
- Screw Twist Mechanism into Coupler until it bottoms.
- Press the Cap over Twist Mechanism.
- Insert refill into other end of Barrel and place Spring over Refill tip.
- Screw Tip over Refill and Spring into the thread inside the barrel.
- Operate by twisting Cap to extend and retract Refill.

