

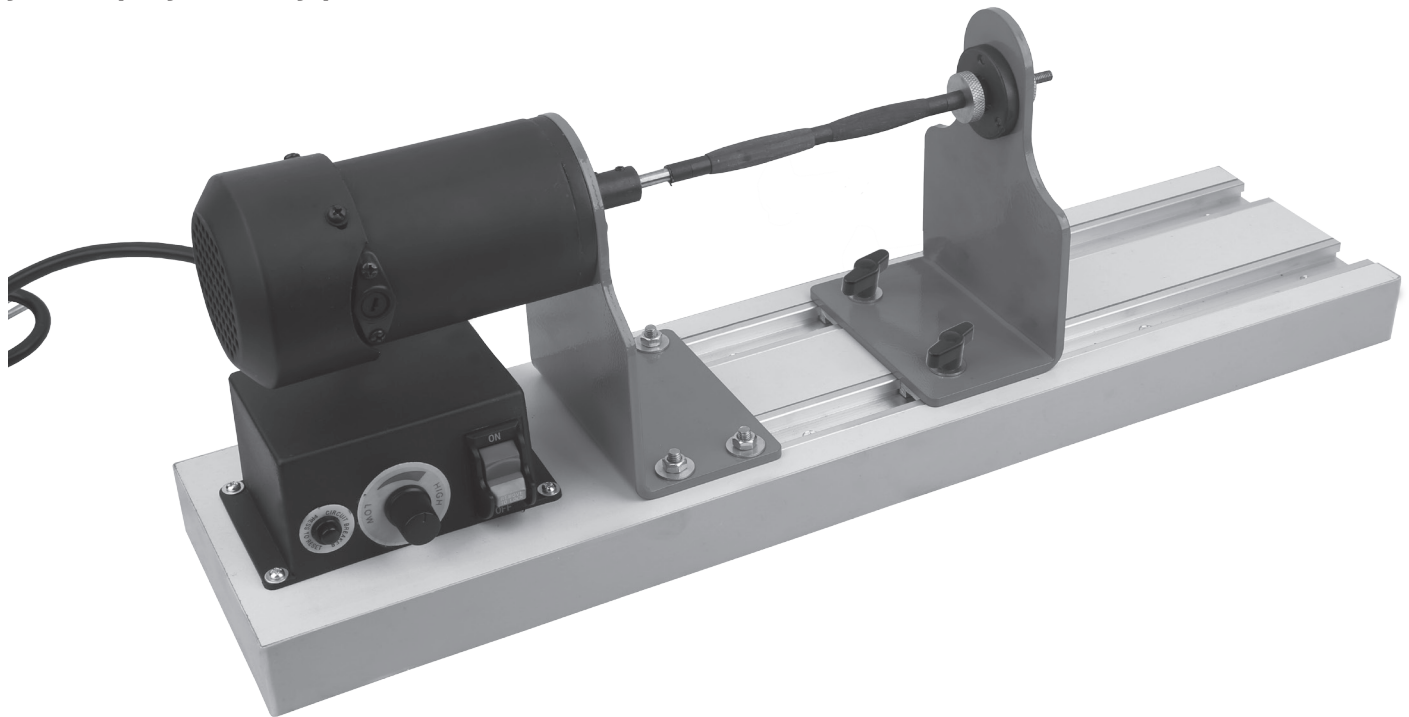
LBUFFSE

Pen Finishing Station

User's Manual

APPLICATIONS:

Sanding, finishing or polishing of wood, acrylic, or polymer clay pen blanks.



WARRANTY

This product is warranted against defects in materials and workmanship for a period of three (3) years from the date of purchase. This warranty applies to the purchaser of this product, and is limited to repair or replacement of the product or it's parts at PSI Woodworking Products' discretion. Excluded are parts, which have been misused, abused, altered, or consumed by normal operation of the machine. Also excluded are direct or consequential damages to the persons, property, and/or materials. Your invoice serves as proof of purchase and must be referenced prior to return authorization. Contact your dealer where you purchased your finishing station for service or repair issues.

NOTE: This device is not intended to be used for wood turning. Damage or motor burnout when used for turning will void this warranty.

GENERAL SAFETY RULES

1. **KEEP GUARDS IN PLACE** and in working order.
2. **KEEP WORK AREA CLEAN.** Cluttered areas and benches invite accidents.
3. **DON'T USE IN DANGEROUS ENVIRONMENT.** Don't use power tools in damp or wet locations, or expose them to rain. Keep work area well lighted.
4. **KEEP CHILDREN AWAY.** All visitors should be kept safe distance from work area.
5. **MAKE WORKSHOP KID PROOF** removing starter keys.
6. **DON'T FORCE TOOL.** It will do the job better and safer at the rate for which it was designed.
7. **USE RIGHT TOOL.** Don't force tool or attachment to do a job for which it was not designed.
8. **USE PROPER EXTENSION CORD.** Make sure your extension cord is in good condition. When using an extension cord, be sure to use one heavy enough to carry the current your product will draw. An undersized cord will cause a drop in line voltage resulting in loss of power and overheating. Table shows the correct size to use depending on cord length and nameplate ampere rating. If in doubt, use the next heavier gage. The smaller the gage number, the heavier the cord.
9. **WEAR PROPER APPAREL.** Do not wear loose clothing, gloves, neckties, rings, bracelets, or other jewelry which may get caught in moving parts. Nonslip footwear is recommended. Wear protective hair covering to contain long hair.
10. **ALWAYS USE SAFETY GLASSES.** Also use face or dust mask if cutting operation is dusty. Everyday eyeglasses only have impact resistant lenses, they are NOT safety glasses.
11. **DON'T OVERREACH.** Keep proper footing and balance at all times.
12. **MAINTAIN TOOLS WITH CARE.** Keep tools sharp and clean for best and safest performance. Follow instructions for lubricating and changing accessories.
13. **DISCONNECT TOOLS** before servicing; when changing accessories, such as blades, bits, cutters, and the like.
14. **REDUCE THE RISK OF UNINTENTIONAL STARTING.** Make sure switch is in off position before plugging in.
15. **USE RECOMMENDED ACCESSORIES.** Consult the owner's manual for recommended accessories. The use of improper accessories may cause risk of injury to persons.
16. **NEVER STAND ON TOOL.** Serious injury could occur if the tool is tipped or if the cutting tool is unintentionally contacted.
17. **CHECK DAMAGED PARTS.** Before further use of the tool, a guard or other part that is damaged should be carefully checked to determine that it will operate properly and perform its intended function – check for alignment of moving parts, binding of moving parts, breakage of parts, mounting, and any other conditions that may affect its operation. A guard or other part that is damaged should be properly repaired or replaced.
18. **NEVER LEAVE TOOL RUNNING UNATTENDED. TURN POWER OFF.** Don't leave tool until it comes to a complete stop.

Minimum gage for cord*

Ampere Rating		Volts	Total length of cord in feet			
		120 V	25 ft	50 ft	100 ft	150 ft
More Than	Not More Than	AWG				
0	6		18	16	14	

Ampere Rating		Volts	Total length of cord in feet			
		120 V	25 ft	50 ft	100 ft	150 ft
More Than	Not More Than	AWG				
6	10		18	16	14	12
10	12		16	16	14	12
12	16		14	12	Not Recommended	

WARNINGS

SAFETY RULES FOR FINISHING STATION

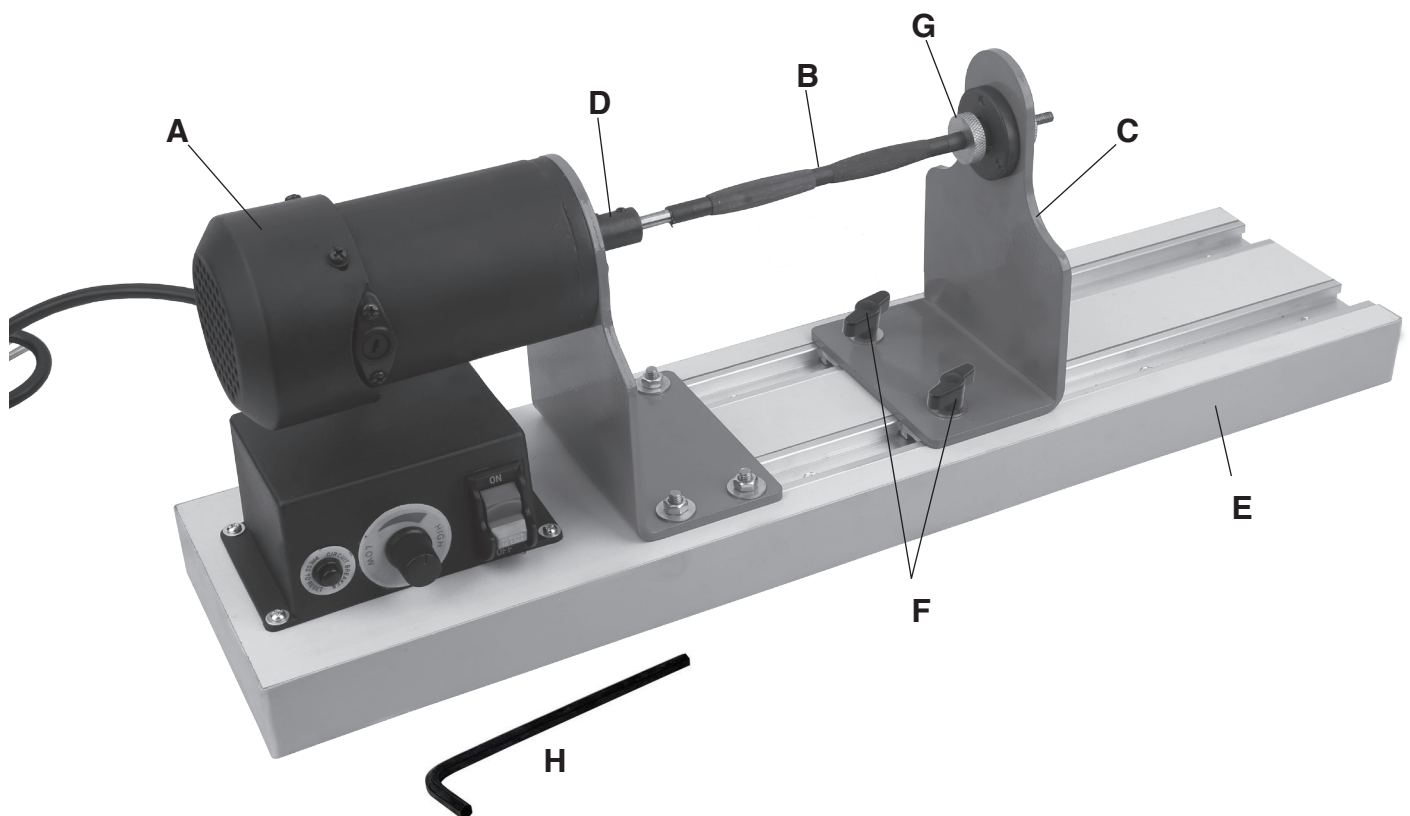
- WARNING** - No adjustment should be made until the tool has been stopped.
- WARNING** - Risk of injury due to accidental starting. Do not use in an area where children may be present.
- WARNING** - For your own safety read instruction manual before operating.
- WARNING** - Do not tighten blanks onto mandrel unsupported by tailstock bearing.

1. Wear eye protection.
2. Do not wear necktie, or loose clothing.
3. Tighten all locks before operating.
4. Rotate workpiece by hand before applying power.
5. Use lowest speed when starting new workpiece.
6. Do not use the turning tools on this machine.
7. **WARNING: DO NOT EXPOSE TO RAIN OR USE IN DAMP LOCATIONS.**

SPECIFICATIONS

MOTOR:	1/6 HP
RPM:	500 TO 3500 RPM
OVERALL WEIGHT:	16lbs net
OVERALL LENGTH X DEPTH X HEIGHT:	23-1/4" X 5-3/4" X 8"
PEN MANDREL LENGTH:	9"

FIG 1 - PEN FINISHING STATION COMPONENTS



SYSTEM INCLUDES

- A) Variable speed motor with overload circuit breaker, speed control knob and on off switch
- B) 9" Pen mandrel with 5ea Slimline pen bushings and one 1-3/8" long mandrel bushing
- C) Tailstock Assembly with center bearing
- D) Headstock spindle
- E) Station Bed
- F) 2 Lock knobs
- G) 2 Knurl nuts
- H) Alan wrench to secure mandrel to motor

OPERATING INSTRUCTIONS

Mounting the pen blanks

Secure the bed(E) on a non-slip surface, use clamps, or drive 2" wood screws or bolts thru the base to secure on a work surface.

Slide the tailstock(C) back and out of the way while inserting the pen mandrel and blanks.

Insert 7mm mandrel (B) into headstock spindle, lock in place by tightening the set screws (2) onto the flat at the end of the mandrel with the Alan wrench (H) provided

Slide Pen blanks onto the 7mm mandrel (B) with enough bushings to take up space to the threads on the end of the mandrel. Use step bushings as necessary to mount the blanks.

Thread the Blank Locking nut (G) onto the end of the mandrel to lock the blanks in place- **DO NOT TIGHTEN YET. NOTE** - Without the mandrel supported as you tighten the nut, you are at risk of bending the mandrel.

Slide the tailstock towards the headstock. Slide the threaded end of the mandrel through the tailstock bearing.

At this time you can tighten the knurled Blank Locking nut (G) onto the blanks and bushing assembly to secure the blanks and bushings in place.

Slide the tailstock up so the bearing assembly presses against the Blank locking nut. Once the mandrel assembly and tailstock are positioned and assembled, tighten the 2 lock knobs to secure the tailstock.

Sanding and Finishing

The sanding and finishing process using this Sanding Station is the same as you would use as if the wood, acrylics or polymer clay blanks were mounted on the lathe.

Keep in mind the following traditional methods:

- 1) Sand wood at lower speeds progressively starting at 150 grit on up to a minimum of 600 grit
- 2) Sand Acrylics similarly but sand to a minimum of 1000 grit for best results.
- 3) Sand Polymer Clay blanks with the 8 grit sanding set #MCM-SAP - follow the instructions included with this kit.
- 4) Use appropriate wood or acrylic finishes at faster speeds - i.e. #PWSWEEE and #PKSWAX250 for wood, #ONESTEP for acrylics or Polymer Clay.
- 5) Use CA finishing system #PKCAFINSET for getting a hard shiny finish on Wood or Polymer clay

Buffing

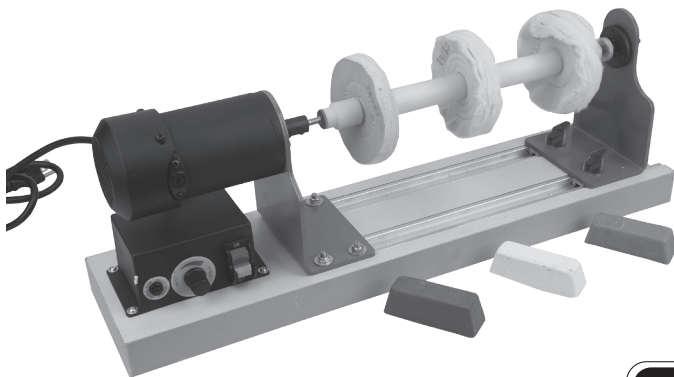
Two buffing attachments are available for the most outstanding finishes on your blanks. (not included)

Wood - System #LBUFFSEY includes 3 4" buffing wheels and 3 buffing compounds plus a dedicated 15.5" mandrel

Acrylic - System #LBUFFSEZ includes 2 buffing wheels and 1 buffing compound on a dedicated 11" mandrel

Specific instructions for use are included with those accessories.

#LBUFFSEY - Wood Buffing Accessory



#LBUFFSEZ - Acrylic buffing accessory

